

Activity ID	Activity Name	Rem Dur	Start	Finish	Total Float	2016												2017							
						November						December						January							
						16	23	30	06	13	20	27	04	11	18	25	01	08	15	22					
3MRP - Oct 2016 to Jan 2017						105	20-Jun-15 A	22-Feb-17	836																
02 - PRE-CONSTRUCTION WORKS						102	20-Jun-15 A	18-Feb-17	207																
02.3 - Method Statement / Shop Drawings						90	20-Jun-15 A	17-Jan-17	283																
0230-1380	MS Landscape Deck Structure - Submission	6	20-Jun-15 A	25-Oct-16	205	MS Landscape Deck Structure - Submission																			
0230-1390	MS Landscape Deck Structure - ER Review & Comment	28	26-Oct-16	22-Nov-16	205	MS Landscape Deck Structure - ER Review & Comment																			
0230-1400	MS Landscape Deck Structure - Resubmission	28	23-Nov-16	20-Dec-16	205	MS Landscape Deck Structure - Resubmission																			
0230-1410	MS Landscape Deck Structure - ER Approval	28	21-Dec-16	17-Jan-17	205	MS Landscape Deck Structure - ER Approval																			
0240-1270	Landscaping Design - Submission	20	20-Apr-16 A	08-Nov-16	297	Landscaping Design - Submission																			
0240-1280	Landscaping Design - ER Review/Resubmission	28	09-Nov-16	06-Dec-16	297	Landscaping Design - ER Review/Resubmission																			
0240-1290	Landscaping Design - ER Approval	28	07-Dec-16	03-Jan-17	297	Landscaping Design - ER Approval																			
0240-1298	Green Roof Minimum 2 years Establishment - Start	0	14-Nov-16		-67	◆ Green Roof Minimum 2 years Establishment - Start																			
0240-2460	MS for for trial erection of green roof - Resubmission	10	04-Apr-16 A	29-Oct-16	-67	MS for for trial erection of green roof - Resubmission																			
0240-2470	MS for for trial erection of green roof - No Adverse Comment	15	30-Oct-16	13-Nov-16	-67	MS for for trial erection of green roof - No Adverse Comment																			
A2100	MS for Demolition Eastbound Bridge - ER Review / Comment	2	15-Oct-16 A	21-Oct-16	-97	MS for Demolition Eastbound Bridge - ER Review / Comment																			
A2110	MS for Demolition Eastbound Bridge - Resubmission	5	22-Oct-16	26-Oct-16	-97	MS for Demolition Eastbound Bridge - Resubmission																			
A2120	MS for Demolition Eastbound Bridge - No Adverse Comment	5	27-Oct-16	31-Oct-16	-97	MS for Demolition Eastbound Bridge - No Adverse Comment																			
A3200	MS for LG-BM Assembly at Pier(F8B - F9B) - Submission	7	19-Sep-16 A	26-Oct-16	-47	MS for LG-BM Assembly at Pier(F8B - F9B) - Submission																			
A3210	MS for LG-BM Assembly at Pier(F8B - F9B) - ER Review / Comment	6	27-Oct-16	01-Nov-16	-47	MS for LG-BM Assembly at Pier(F8B - F9B) - ER Review / Comment																			
A3220	MS for LG-BM Assembly at Pier(F8B - F9B) - Resubmission	6	02-Nov-16	07-Nov-16	-47	MS for LG-BM Assembly at Pier(F8B - F9B) - Resubmission																			
A3230	MS for LG-BM Assembly at Pier(F8B - F9B) - No Adverse Comment	6	08-Nov-16	13-Nov-16	-47	MS for LG-BM Assembly at Pier(F8B - F9B) - No Adverse Comment																			
02.5 - Bridge Segment/Beam Off-site Precasting						102	26-Aug-16 A	18-Feb-17	6																
0250-3980	Bridge F2B - Pier F5B Segment - 6 nos. (S2) - Mould 2	4	26-Aug-16 A	24-Oct-16	-6	Bridge F2B - Pier F5B Segment - 6 nos. (S2) - Mould 2																			
0250-4000	Bridge F3B - Pier F5B Segment - 6 nos. (S2) - Mould 2	17	25-Oct-16	12-Nov-16	-6	Bridge F3B - Pier F5B Segment - 6 nos. (S2) - Mould 2																			
0250-4010	Bridge F3B - Pier F8B Segment - 6 nos. (S2) - Mould 2	19	14-Nov-16	05-Dec-16	-6	Bridge F3B - Pier F8B Segment - 6 nos. (S2) - Mould 2																			
0250-4015	Bridge F2B - Pier F3B2 Segment - 5 nos. (S2) - Mould 2	20	06-Dec-16	29-Dec-16	-6	Bridge F2B - Pier F3B2 Segment - 5 nos. (S2) - Mould 2																			
0250-4040	Bridge F3B - Pier F7B Segment - 11 nos. (S1) - Mould 1	28	17-Oct-16 A	21-Nov-16	-9	Bridge F3B - Pier F7B Segment - 11 nos. (S1) - Mould 1																			
0250-4045	Bridge F3B - Pier F6B Segment - 13 nos. (S2) - Mould 1	37	22-Nov-16	04-Jan-17	-9	Bridge F3B - Pier F6B Segment - 13 nos. (S2) - Mould 1																			
0250-4050	Bridge F2B - Pier F4B Segment - 13 nos. (S1) - Mould 1	37	05-Jan-17	18-Feb-17	6	Bridge F2B - Pier F4B Segment - 13 nos. (S1) - Mould 1																			
A3160	Delivery of Segments - Bridge F3B	14	13-Jan-17	31-Jan-17	-9	Delivery of Segments - Bridge F3B																			
05 - SECTION 2 & 2A OF THE WORKS						105	01-Jul-16 A	22-Feb-17	-275																
05.1 - Cut & Cover Tunnel Ch 4855-4932 (APS Footprint)						105	01-Jul-16 A	22-Feb-17	-275																
05.1.6 - EVB Sub-structure & Tunnel						105	01-Jul-16 A	22-Feb-17	-275																
05.1.6 - EVB Outstanding Works						105	20-Sep-16 A	22-Feb-17	-275																
0515-3099	Complete EVB Outstanding Works	0		22-Feb-17*	-275	Complete EVB Outstanding Works																			
A1960.3	Reinstate the temporary opening	5	10-Nov-16	15-Nov-16	-199	Reinstate the temporary opening																			
A1960.5	Sheet Pile Removal	6	16-Nov-16	22-Nov-16	-199	Sheet Pile Removal																			
A1962	Backfill (N46-64/S48-67) for East Vent Bldg - Stage 2	18	20-Sep-16 A	09-Nov-16	-235	Backfill (N46-64/S48-67) for East Vent Bldg - Stage 2																			
A1962.3	Backfill (N46-64/S48-67) for East Vent Bldg - Stage 3	17	10-Nov-16	29-Nov-16	-235	Backfill (N46-64/S48-67) for East Vent Bldg - Stage 3																			
A1963	Concrete paving / Finishing surface (part 1)	15	30-Nov-16	16-Dec-16	-235	Concrete paving / Finishing surface (part 1)																			
A1963.3	Concrete paving / Finishing surface (part 2)	15	17-Dec-16	04-Jan-17	-235	Concrete paving / Finishing surface																			

█ Remaining Level of Effort █ Remaining Work
█ Actual Level of Effort █ Critical Remaining Work
█ Actual Work ◆ Milestone

Contract HY/2009/19
Three Months Rolling Programme (20 Oct 2016 to 19 Jan 2017)

Activity ID	Activity Name	Rem Dur	Start	Finish	Total Float	2016												2017							
						November						December						January							
						16	23	30	06	13	20	27	04	11	18	25	01	08	15	22					
05.1.7 - EVB & Tunnel Remedial Works						105	01-Jul-16 A	22-Feb-17	-275																
A2270	Tunnel - APS > Rectification of Structural Concrete Defect (ST 1 & 2)	34	01-Jul-16 A	28-Nov-16	-204	Tunnel - APS > Rectification of Structural Concrete Defect (ST 1 & 2)																			
A2271	EVB - Rectification of Concrete Defects at TVF Room 1	5	01-Nov-16*	05-Nov-16	-275	EVB - Rectification of Concrete Defects at TVF Room 1																			
A2272	EVB - Referring damage to uPVC overflow pipe at FS water tank	3	07-Nov-16	09-Nov-16	-275	EVB - Referring damage to uPVC overflow pipe at FS water tank																			
A2273	EVB - Rectification of Concrete Defects at Stairs 01 & 6	15	10-Nov-16	26-Nov-16	-275	EVB - Rectification of Concrete Defects at Stairs 01 & 6																			
A2274	EVB - Rectification of Concrete Defects at Stairs 02	12	28-Nov-16	10-Dec-16	-275	EVB - Rectification of Concrete Defects at Stairs 02																			
A2275	EVB - Rectification of Concrete Defects to Plenum B1-07	12	12-Dec-16	24-Dec-16	-275	EVB - Rectification of Concrete Defects to Plenum B1																			
A2276	EVB - Rectification of Concrete Defects to Vent Shaft	4	28-Dec-16	31-Dec-16	-275	EVB - Rectification of Concrete Defects to																			
A2277	EVB - Rectification of Concrete Defects to Plenum B1-23	12	02-Jan-17	14-Jan-17	-275	EVB - Rectification of																			
A2278	EVB - Rectification of Concrete Defects to GL A-E/3-5	22	16-Jan-17	11-Feb-17	-275																				
A2279	EVB - Rectification of Concrete Defects to to Plenum B1-32 & 35	9	13-Feb-17	22-Feb-17	-275																				
A2310	EVB - (North Side) > Make Good D-wall surface (GL/A-E)	9	31-Oct-16*	09-Nov-16	-251	EVB - (North Side) > Make Good D-wall surface (GL/A-E)																			
A2312	EVB - (South Side) > Make Good D-wall surface (GL 6/E-F)	16	25-Oct-16*	11-Nov-16	-222	EVB - (South Side) > Make Good D-wall surface (GL 6/E-F)																			
A2313	EVB - (South Side) > Make Good D-wall surface (GL 6/M-O)	8	12-Nov-16	21-Nov-16	-222	EVB - (South Side) > Make Good D-wall surface (GL 6/M-O)																			
A2314	EVB - (North Side) > Make Good D-wall surface (GL 2/E-F)	20	22-Nov-16	14-Dec-16	-222	EVB - (North Side) > Make Good D-wall surface (GL 2/E-F)																			
A2315	EVB - (West Side) > Make Good D-wall surface (GL A/4-6)	2	15-Dec-16	16-Dec-16	-222	EVB - (West Side) > Make Good D-wall surface (GL A/4-6)																			
A2316	EVB - (West Side) > Make Good D-wall surface (GL A/4-6)	2	17-Dec-16	19-Dec-16	-222	EVB - (West Side) > Make Good D-wall surface (GL A/4-6)																			
A2320	EVB - (South Side) > Reinstate D-Wall sleeve pipe & remaining water seepage 7nos (GL D-F)	10	01-Nov-16*	11-Nov-16	-262	EVB - (South Side) > Reinstate D-Wall sleeve pipe & remaining water seepage 7nos (GL D-F)																			
A2322	EVB - (South Side) > Remaining water seepage 2nos (GL L)	2	12-Nov-16	14-Nov-16	-262	EVB - (South Side) > Remaining water seepage 2nos (GL L)																			
A2330	EVB - Rectification of remaining water seepage at Stairs 03	2	15-Nov-16	16-Nov-16	-194	EVB - Rectification of remaining water seepage at Stairs 03																			
09 - SECTION 6 OF THE WORKS						104	05-Jul-16 A	21-Feb-17	837																
09.1 - Carpark for Harbour Grand Hong Kong						104	05-Jul-16 A	21-Feb-17	837																
Hoarding (Additional Hoarding requested by HGHK)						61	15-Sep-16 A	02-Jan-17	-66																
A3520	Design and Submission (if ICE required)	0	15-Sep-16 A	29-Sep-16 A		Design and Submission (if ICE required)																			
A3530	Subletting & Procurement	0	30-Sep-16 A	17-Oct-16 A		Subletting & Procurement																			
A3540	Construction of Add'l Hoarding	12	22-Oct-16	04-Nov-16	-72	Construction of Add'l Hoarding																			
A4090	Demolition of Add'l Hoarding	12	19-Dec-16	02-Jan-17	-66	Demolition of Add'l Hoarding																			
HGHK Access Relocation						12	31-Oct-16	14-Nov-16	-67																
A3470	Levelling & Pavement	12	31-Oct-16*	12-Nov-16	-67	Levelling & Pavement																			
A3480	Diversion of Access	0	14-Nov-16		-67	◆ Diversion of Access																			
HGHK Reprovision						104	05-Jul-16 A	21-Feb-17	837																
Design, Submission, Material Approval						104	05-Jul-16 A	21-Feb-17	837																
Revised Boundary Wall						104	03-Oct-16 A	21-Feb-17	-37																
A3660	Confirm A&A Plan (By AECOM)	0	03-Oct-16 A			Confirm A&A Plan (By AECOM)																			
A3670	Prepare Wall Design (for Stage 2 only; Stage 1 previously app'd)	5	03-Oct-16 A	25-Oct-16	-83	Prepare Wall Design (for Stage 2 only; Stage 1 previously app'd)																			
A3680	A&A Submission (for Stage 2 only; Stage 1 previously app'd)	51	26-Oct-16	23-Dec-16	-83	A&A Submission (for Stage 2 only; Stage 1 previously app'd)																			
A3690	BA8 + Supervision Plan (Wall) (for Stage 2 only; Stage 1 previously app'd)	24	24-Dec-16	21-Jan-17	-83	BA8 + Supervision Plan (Wall) (for Stage 2 only; Stage 1 previously app'd)																			
A3700	BA10 (Wall)	0	23-Jan-17		-83	◆ BA10 (Wall)																			
A3710	BA14 (Wall)	0		21-Feb-17	-37																				
A3720	Prepare Tiling Layout	0	03-Oct-16 A	17-Oct-16 A		Prepare Tiling Layout																			

Remaining Level of Effort	Remaining Work
Actual Level of Effort	Critical Remaining Work
Actual Work	Milestone

Contract HY/2009/19
Three Months Rolling Programme (20 Oct 2016 to 19 Jan 2017)

Activity ID	Activity Name	Rem Dur	Start	Finish	Total Float	2016												2017			
						November						December						January			
						16	23	30	06	13	20	27	04	11	18	25	01	08	15	22	
A3730	Confirm Tiling Layout by (AECOM)	0		17-Oct-16 A		Confirm Tiling Layout by (AECOM)															
Material Approval and Procurement		52	05-Jul-16 A	19-Dec-16	889																
A3740	Floor Tile Approval	0	05-Jul-16 A	30-Aug-16 A																	
A3750	Floor Tile Procurement & Delivery	52	18-Oct-16 A	19-Dec-16	-67	Floor Tile Procurement & Delivery															
A3760	Wall Tile Procurement & Delivery	52	18-Oct-16 A	19-Dec-16	-67	Wall Tile Procurement & Delivery															
Construction		98	06-Sep-16 A	14-Feb-17	-83																
Stage 1 Construction (Below IEC W/B)		78	06-Sep-16 A	19-Jan-17	-63																
A3790	Demolition - General Clearance	0	06-Sep-16 A	06-Oct-16 A		General Clearance															
A3800	Planter Box (RC)	15	06-Oct-16 A	05-Nov-16	-56	Planter Box (RC)															
A3810	900H Boundary Wall (RC)	15	06-Oct-16 A	05-Nov-16	-56	900H Boundary Wall (RC)															
A3820	3000H Feature Wall (RC)	15	06-Oct-16 A	05-Nov-16	-56	3000H Feature Wall (RC)															
A3830	Drainage Construction	20	10-Oct-16 A	11-Nov-16	-61	Drainage Construction															
A3840	E&M Manhole & Ducting Construction	12	12-Nov-16	25-Nov-16	-61	E&M Manhole & Ducting Construction															
A3850	Waterpipe Installation	12	12-Nov-16	25-Nov-16	-61	Waterpipe Installation															
A3860	Slab Construction	12	26-Nov-16	09-Dec-16	-61	Slab Construction															
A3870	Screeding + Floor + Mix	6	10-Dec-16	16-Dec-16	-61	Screeding + Floor + Mix															
A3880	Tiling (Stage 1)	26	20-Dec-16	19-Jan-17	-63	Tiling (Stage 1)															
Stage 2 Construction (Below IEC E/B)		53	12-Dec-16	14-Feb-17	-83																
A3890	Demolition (Advance Works prior to Bridge Demolition) - General Clearance	6	12-Dec-16	17-Dec-16	-54	Demolition (Advance Works prior to Bridge Demolition) - General Clearance															
A3900	3000H Feature Wall (RC)	12	28-Dec-16	10-Jan-17	-73	3000H Feature Wall (RC)															
A3910	1800H Boundary Wall (RC)	18	23-Jan-17	14-Feb-17	-83	1800H Boundary Wall (RC)															
10 - SECTION X OF THE WORKS		89	01-Jul-16 A	03-Feb-17	852																
10.2 - W/B Bridges (Bridge C and F)		23	01-Jul-16 A	15-Nov-16	918																
10.2.1 - Tie Beam & Pile Caps Extension		10	26-Sep-16 A	31-Oct-16	931																
A1950	Pier 23 > Tie Beam. - Remove Fwk & Backfilling	4	27-Oct-16	31-Oct-16	272	Pier 23 > Tie Beam. - Remove Fwk & Backfilling															
A2180	Pier 22 > Tie Beam. - Post Drilling & Rebar Fixing Works	2	26-Sep-16 A	21-Oct-16	272	Pier 22 > Tie Beam. - Post Drilling & Rebar Fixing Works															
A2190	Pier 22 > Tie Beam. - Formworks & Concreting Works	4	22-Oct-16	26-Oct-16	272	Pier 22 > Tie Beam. - Formworks & Concreting Works															
A2200	Pier 22 > Tie Beam. - Remove Fwk & Backfilling	4	27-Oct-16	31-Oct-16	272	Pier 22 > Tie Beam. - Remove Fwk & Backfilling															
A2240	Pier 24 > Tie Beam. - Remove Fwk & Backfilling	2	17-Oct-16 A	21-Oct-16	939	Pier 24 > Tie Beam. - Remove Fwk & Backfilling															
10.2.3 - Bridge Construction		23	01-Jul-16 A	15-Nov-16	14																
Bridge C1		14	31-Oct-16	15-Nov-16	14																
1022-3100	Bridge C1 - Construct North Parapet Pier 19-20 W/B	14	31-Oct-16	15-Nov-16	14	Bridge C1 - Construct North Parapet Pier 19-20 W/B															
Bridge C2		5	30-Sep-16 A	25-Oct-16	-80																
1022-4120.4	Bridge C2 - Construct Int. Single Noise Encl. Bridge C2 - Excl. Pier 25-22 - Panel Installation at MJ location	5	19-Oct-16 A	25-Oct-16	-80	Bridge C2 - Construct Int. Single Noise Encl. Bridge C2 - Excl. Pier 25-22 - Panel Installation at MJ location															
1022-4140	Bridge C2 + C1 Deck Road Waterproofing, Surfacing & Marking	4	30-Sep-16 A	24-Oct-16	-79	Bridge C2 + C1 Deck Road Waterproofing, Surfacing & Marking															
Bridge C3		5	19-Oct-16 A	25-Oct-16	-80																
1022-4110.8	Bridge C3 - Construct Int. Single Noise Encl. Bridge C3 - Panel Installation at MJ Location	5	19-Oct-16 A	25-Oct-16	-80	Bridge C3 - Construct Int. Single Noise Encl. Bridge C3 - Panel Installation at MJ Location															
Bridge C4		3	26-Sep-16 A	22-Oct-16	-78																
1022-1558.3	Bridge C4 - Construct Int. Single Noise Encl. Bridge C4 - Panel Installation at MJ Location	3	17-Oct-16 A	22-Oct-16	-78	Bridge C4 - Construct Int. Single Noise Encl. Bridge C4 - Panel Installation at MJ Location															
1022-1564	Bridge C4 - Deck Road Waterproofing, Surfacing & Marking	2	26-Sep-16 A	21-Oct-16	-77	Bridge C4 - Deck Road Waterproofing, Surfacing & Marking															

█ Remaining Level of Effort █ Remaining Work
█ Actual Level of Effort █ Critical Remaining Work
█ Actual Work ◆ Milestone

Contract HY/2009/19
Three Months Rolling Programme (20 Oct 2016 to 19 Jan 2017)

Activity ID	Activity Name	Rem Dur	Start	Finish	Total Float	2016												2017							
						November						December						January							
						16	23	30	06	13	20	27	04	11	18	25	01	08	15	22					
Bridge C5						3	13-Oct-16 A	22-Oct-16	-78																
1022-3953.3	Bridge C5 - Construct Int. Single Noise Encl. Bridge C5 - Panel Installation at MJ Location	3	13-Oct-16 A	22-Oct-16	-78	Bridge C5 - Construct Int. Single Noise Encl. Bridge C5 - Panel Installation at MJ Location																			
Bridge F1C						3	02-Sep-16 A	22-Oct-16	-78																
1022.1-4249	Bridge F1C - Construct Int. Double Noise Encl. Bridge F1C - Secondary Farmes & Panels	3	02-Sep-16 A	22-Oct-16	-78	Bridge F1C - Construct Int. Double Noise Encl. Bridge F1C - Secondary Farmes & Panels																			
1022.1-4251	Bridge F1C - Bridge F1C Deck Road Waterproofing, Surfacing & Marking	2	26-Sep-16 A	22-Oct-16	-78	Bridge F1C - Bridge F1C Deck Road Waterproofing, Surfacing & Marking																			
Bridge F2C						7	12-Sep-16 A	27-Oct-16	-82																
1022.1-4363	Bridge F2C - Construct Int. Double Noise Encl. (54m) - Secondary Farmes & Panels	7	12-Sep-16 A	27-Oct-16	-82	Bridge F2C - Construct Int. Double Noise Encl. (54m) - Secondary Farmes & Panels																			
Bridge F3C						8	03-Oct-16 A	28-Oct-16	-84																
1022.1-4531	Bridge F3C - Construct Int. Double Noise Encl. Bridge F3C (83m) - Panel Installation	8	03-Oct-16 A	28-Oct-16	-84	Bridge F3C - Construct Int. Double Noise Encl. Bridge F3C (83m) - Panel Installation																			
All W/B Bridges (Common)						8	01-Jul-16 A	28-Oct-16	-82																
A2450	Instalation of L3 Railings (Bridge C4 - C5)	0	05-Sep-16 A	19-Oct-16 A		Instalation of L3 Railings (Bridge C4 - C5)																			
A2460	Instalation of L3 Railings (Bridge F1C - F5)	3	20-Sep-16 A	22-Oct-16	-78	Instalation of L3 Railings (Bridge F1C - F5)																			
A2470	Instalation of L3 Railings (Bridge C3 - C1)	3	17-Sep-16 A	22-Oct-16	-77	Instalation of L3 Railings (Bridge C3 - C1)																			
A2490	Installation of Watermains and Fire Hydrant at WB Bridge	0	01-Jul-16 A	27-Sep-16 A		Installation of Watermains and Fire Hydrant at WB Bridge																			
A2500	Testing of Water mains and Fire Hydrant at WB Bridge	0	28-Sep-16 A	05-Oct-16 A		Testing of Water mains and Fire Hydrant at WB Bridge																			
A2505	Sterilization Test	1	27-Oct-16*	27-Oct-16	-81	Sterilization Test																			
A2510	Lighting Installation (Bridge C4 - C5)	2	20-Sep-16 A	21-Oct-16	-78	Lighting Installation (Bridge C4 - C5)																			
A2520	Lighting Installation (Bridge F1C - F5)	2	29-Sep-16 A	24-Oct-16	-78	Lighting Installation (Bridge F1C - F5)																			
A2530	Instalation of L3 Railings (Bridge C3 - C1)	2	26-Sep-16 A	21-Oct-16	-76	Instalation of L3 Railings (Bridge C3 - C1)																			
A4100	Water Tightness Test for Noise Enclosure	1	28-Oct-16	28-Oct-16	-82	Water Tightness Test for Noise Enclosure																			
10.4 - Bridge Deck Demolition						71	31-Oct-16	21-Jan-17	861																
10.4.1 - Existing W/B Bridge						0	31-Oct-16	31-Oct-16	932																
10.4.1.2 - Demolition Works						0	31-Oct-16	31-Oct-16	932																
10410-2580	Complete TTA for W/B Bridge Demolition & Re-Construction	0		31-Oct-16	932	◆ Complete TTA for W/B Bridge Demolition & Re-Construction																			
10.4.3 - Existing E/B Bridge						71	31-Oct-16	21-Jan-17	-1																
10412-2060.0	Remove Pavement (P25 to P28)	6	31-Oct-16	05-Nov-16	-73	Remove Pavement (P25 to P28)																			
10412-2060.0	Remove Road Furniture (P25 to P28)	6	31-Oct-16	05-Nov-16	-73	Remove Road Furniture (P25 to P28)																			
10412-2060.0	Remove Tem Water Pipe (P25 to P28)	6	31-Oct-16	05-Nov-16	-73	Remove Tem Water Pipe (P25 to P28)																			
10412-2060.1	Remove Parapet (P25 to P28)	24	07-Nov-16	03-Dec-16	-73	Remove Parapet (P25 to P28)																			
10412-2060.1	Saw Cutting & Coring holes of Bridge Deck - (Pier 28-27)	4	07-Nov-16	10-Nov-16	-73	Saw Cutting & Coring holes of Bridge Deck - (Pier 28-27)																			
10412-2060.1	Saw Cutting & Coring holes of Bridge Deck - (Pier 27-26)	4	11-Nov-16	15-Nov-16	-63	Saw Cutting & Coring holes of Bridge Deck - (Pier 27-26)																			
10412-2060.1	Saw Cutting & Coring holes of Bridge Deck - (Pier 26-25)	4	16-Nov-16	19-Nov-16	-55	Saw Cutting & Coring holes of Bridge Deck - (Pier 26-25)																			
10412-2060.1	Erection of Cranes & Testing at Pier 27-29	6	12-Nov-16	18-Nov-16	-73	Erection of Cranes & Testing at Pier 27-29																			
10412-2060.1	Deck Demolition P28 - P27 (By Crane)	6	21-Nov-16	26-Nov-16	-73	Deck Demolition P28 - P27 (By Crane)																			
10412-2060.1	Deck Demolition P27 - P26 (By Crane)	6	28-Nov-16	03-Dec-16	-73	Deck Demolition P27 - P26 (By Crane)																			
10412-2060.1	Pier 27 Crosshead Demolition	3	05-Dec-16	07-Dec-16	-73	Pier 27 Crosshead Demolition																			
10412-2060.1	Pier 27 Temporary Support Removal	2	08-Dec-16	09-Dec-16	-73	Pier 27 Temporary Support Removal																			
10412-2060.1	Pier 27 Demolition	1	10-Dec-16	10-Dec-16	-73	Pier 27 Demolition																			
10412-2060.2	Deck Demolition P26-25 (By Crane)	6	12-Dec-16	17-Dec-16	-73	Deck Demolition P26-25 (By Crane)																			
10412-2060.2	Pier 26 Crosshead Demolition	3	19-Dec-16	21-Dec-16	-73	Pier 26 Crosshead Demolition																			

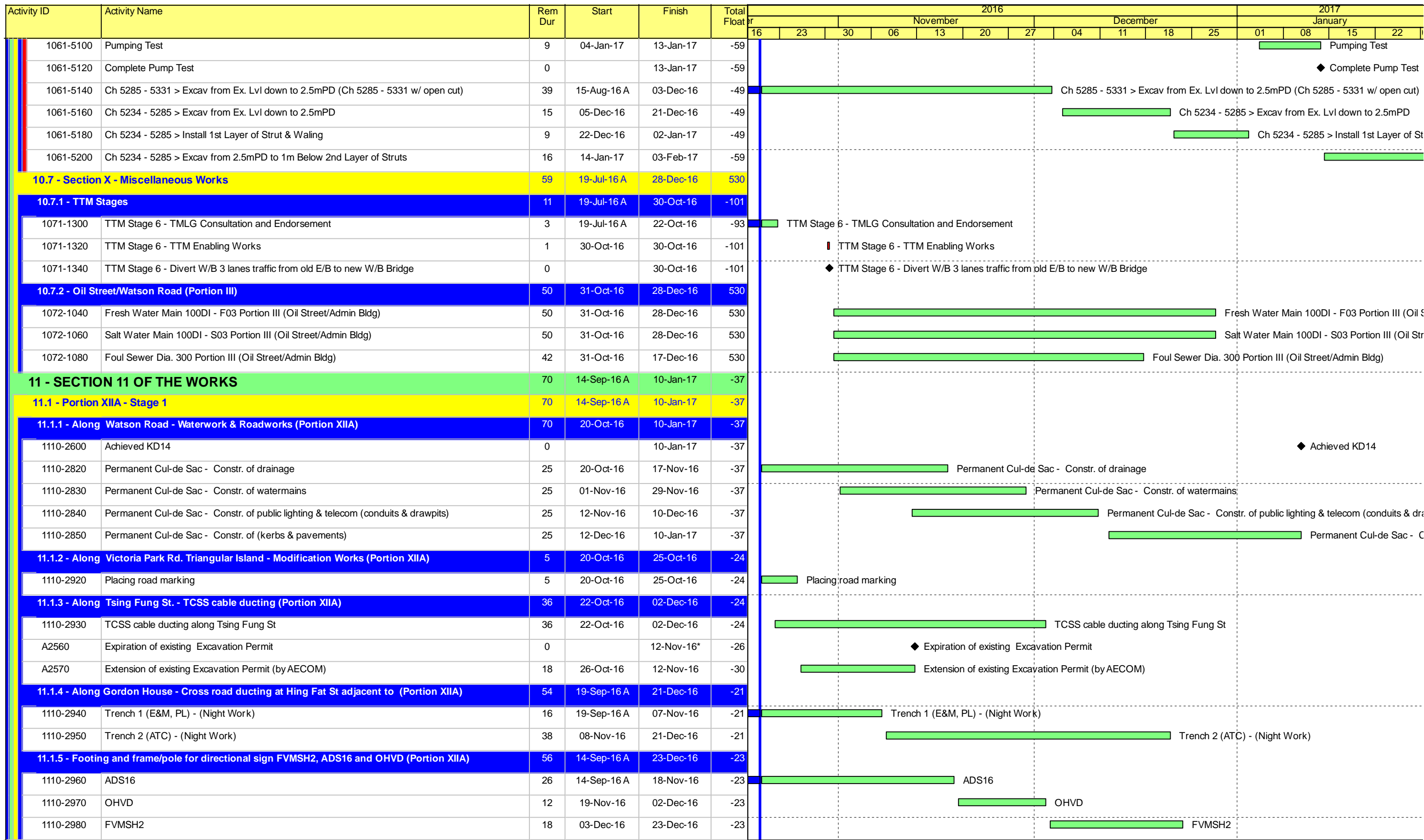
Remaining Level of Effort	Remaining Work
Actual Level of Effort	Critical Remaining Work
Actual Work	Milestone

Contract HY/2009/19
Three Months Rolling Programme (20 Oct 2016 to 19 Jan 2017)

Activity ID	Activity Name	Rem Dur	Start	Finish	Total Float	2016											2017					
						November					December			January								
						16	23	30	06	13	20	27	04	11	18	25	01	08	15	22		
10412-2060.2	Pier 26 Temp Support Removal	2	22-Dec-16	23-Dec-16	-73																	Pier 26 Temp Support Removal
10412-2060.2	Pier P26 Demolition	2	24-Dec-16	27-Dec-16	-73																	Pier P26 Demolition
A2580	Scraping of Asphalt at existng Old E/B Bridge	4	31-Oct-16	03-Nov-16	-83																	Scraping of Asphalt at existng Old E/B Bridge
A2590	Saw Cutting of Bridge Deck - (Pier 44-43)	4	02-Nov-16	05-Nov-16	-83																	Saw Cutting of Bridge Deck - (Pier 44-43)
A2600	Saw Cutting of Bridge Deck - (Pier 43-42)	4	07-Nov-16	10-Nov-16	-83																	Saw Cutting of Bridge Deck - (Pier 43-42)
A2610	Saw Cutting of Bridge Deck - (Pier 42-41)	4	11-Nov-16	15-Nov-16	-81																	Saw Cutting of Bridge Deck - (Pier 42-41)
A2612	Saw Cutting of Bridge Deck - (Pier 41-40)	4	16-Nov-16	19-Nov-16	-24																	Saw Cutting of Bridge Deck - (Pier 41-40)
A2620	Saw Cutting of Bridge Deck - (Pier 40-39)	4	21-Nov-16	24-Nov-16	-16																	Saw Cutting of Bridge Deck - (Pier 40-39)
A2630	Saw Cutting of Bridge Deck - (Pier 39-38)	4	25-Nov-16	29-Nov-16	-8																	Saw Cutting of Bridge Deck - (Pier 39-38)
A2640	Saw Cutting of Bridge Deck - (Pier 38-37)	4	30-Nov-16	03-Dec-16	0																	Saw Cutting of Bridge Deck - (Pier 38-37)
A2650	Saw Cutting of Bridge Deck - (Pier 37-36)	4	05-Dec-16	08-Dec-16	8																	Saw Cutting of Bridge Deck - (Pier 37-36)
A2660	Saw Cutting of Bridge Deck - (Pier 36-35)	4	09-Dec-16	13-Dec-16	16																	Saw Cutting of Bridge Deck - (Pier 36-35)
A2670	Saw Cutting of Bridge Deck - (Pier 35-34)	4	14-Dec-16	17-Dec-16	28																	Saw Cutting of Bridge Deck - (Pier 35-34)
A2680	Erection of Two(2nos) Cranes & Testing at Pier 39-41 - (Crane A & B)	6	08-Nov-16	14-Nov-16	-83																	Erection of Two(2nos) Cranes & Testing at Pier 39-41 - (Crane A & B)
A2685	Demolish Three(3nos) Beams at Pier 42-43 - Crane A & B	2	15-Nov-16	16-Nov-16	-82																	Demolish Three(3nos) Beams at Pier 42-43 - Crane A & B
A2687	Demolish Three(3nos) Beams at Pier 42-41 - Crane A & B	2	17-Nov-16	18-Nov-16	-82																	Demolish Three(3nos) Beams at Pier 42-41 - Crane A & B
A2688	Erection of One(1no) Crane & Testing at Pier 44-45 - (Crane C)	6	14-Nov-16	19-Nov-16	-83																	Erection of One(1no) Crane & Testing at Pier 44-45 - (Crane C)
A2689	Demolish Seven(7nos) Beams at Pier 43-44 - Crane B & C	6	21-Nov-16	26-Nov-16	-83																	Demolish Seven(7nos) Beams at Pier 43-44 - Crane B & C
A2690	Partial cutting of crosshead Pier 43	1	28-Nov-16	28-Nov-16	-83																	Partial cutting of crosshead Pier 43
A2730	Demolish Three(3nos) Beams at Pier 41-40 - Crane A & B	4	28-Nov-16	01-Dec-16	-30																	Demolish Three(3nos) Beams at Pier 41-40 - Crane A & B
A2740	Demolish Three(3nos) Beams at Pier 40-39 - Crane A & B	4	02-Dec-16	06-Dec-16	-22																	Demolish Three(3nos) Beams at Pier 40-39 - Crane A & B
A2750	Demolish Three(3nos) Beams at Pier 39-38 - Crane A & B	4	07-Dec-16	10-Dec-16	-14																	Demolish Three(3nos) Beams at Pier 39-38 - Crane A & B
A2760	Demolish Three(3nos) Beams at Pier 38-37 - Crane A & B	4	12-Dec-16	15-Dec-16	-6																	Demolish Three(3nos) Beams at Pier 38-37 - Crane A & B
A2770	Demolish Three(3nos) Beams at Pier 37-36 - Crane A & B	4	16-Dec-16	20-Dec-16	2																	Demolish Three(3nos) Beams at Pier 37-36 - Crane A & B
A2780	Demolish Three(3nos) Beams at Pier 36-35 - Crane A & B	4	21-Dec-16	24-Dec-16	10																	Demolish Three(3nos) Beams at Pier 36-35 - Crane A & B
A2790	Erection and Testing of LG-BM at Pier 43-45 - Crane C	32	29-Nov-16	05-Jan-17	-83																	Erection and Testing of LG-BM at Pier 43-45 - Crane C
A2800	Demolish Four(4nos) Beams at Pier 43-42 - by LG-BM	2	06-Jan-17	07-Jan-17	-83																	Demolish Four(4nos) Beams at Pier 43-42 - by LG-BM
A2830	Demolish Pier + Steel Support at Pier 43	9	09-Jan-17	18-Jan-17	-83																	Demolish Pier + Steel Support at Pier 43
A2832	Launch LG-BM to next Bridge Span	1	19-Jan-17	19-Jan-17	-83																	Launch LG-BM to next Bridge Span
A3240	Demolish Four(4nos) Beams at Pier 42-41 - by LG-BM	2	20-Jan-17	21-Jan-17	-83																	Demolish Four(4nos) Beams at Pier 42-41 - by LG-BM
10.6 - Tunnel Approach Ramp		89	12-Jul-16 A	03-Feb-17	-4																	
10.6.1 - Approach Ramp (Excluding Portion IIB)		89	12-Jul-16 A	03-Feb-17	-4																	
Excavation & ELS Works		89	12-Jul-16 A	03-Feb-17	-4																	
1061-4901.1	Sheet Piling Works (WF2>B1:46m@1.5m/d)	10	10-Oct-16 A	31-Oct-16	-5																	Sheet Piling Works (WF2>B1:46m@1.5m/d)
1061-4901.2	Sheet Piling Works (WF1>B3:19m@1.5m/d)	13	12-Jul-16 A	03-Nov-16	-8																	Sheet Piling Works (WF1>B3:19m@1.5m/d)
1061-4910	Advance Sheet Piling Works + Pre-drilling in Phase 2 - Cul de sac Area (30m)	14	04-Nov-16	19-Nov-16	58																	Advance Sheet Piling Works + Pre-drilling in Phase 2 - Cul de sac Area (30m)
1061-4915	Tam Grouting	16	14-Sep-16 A	07-Nov-16	-17																	Tam Grouting
1061-5040	Recharge Well Installation (8Nos)	10	22-Nov-16*	02-Dec-16	-59																	Recharge Well Installation (8Nos)
1061-5060	Dewatering Well Installation (14Nos)	14	03-Dec-16	19-Dec-16	-59																	Dewatering Well Installation (14Nos)
1061-5080	Observation Well Installation (10Nos)	12	20-Dec-16	03-Jan-17	-59																	Observation Well Installation (10Nos)

	Remaining Level of Effort		Remaining Work
	Actual Level of Effort		Critical Remaining Work
	Actual Work		Milestone

**Contract HY/2009/19
Three Months Rolling Programme (20 Oct 2016 to 19 Jan 2017)**



█ Remaining Level of Effort █ Remaining Work
█ Actual Level of Effort █ Critical Remaining Work
█ Actual Work ◆ Milestone

Contract HY/2009/19
Three Months Rolling Programme (20 Oct 2016 to 19 Jan 2017)

MU71		CWB - MU71 Programme Layout_1										01-Sep-16 13:40								
Activity ID	Activity Name	Physical % Complete	Original Duration	Start	Finish	Total Float	2016												2017	
							Dec	Jan	Feb	Mar	Apr	May	Jun	Jul	Aug	Sep	Oct	Nov	Dec	Jan
HY/2009/15 - Works Programme Update 20 August 2016																				
Stage and Section Completion																				
KD_5745	KD10 - Completion of Section 5, (1863d)	100%	0d		25-Mar-16 A												◆ KD10 - Completion of Section 5, (1863d)			
KD_5750	KD11 - Completion of Section 6, (1949d)	0%	0d		30-Sep-16*	-245d											◆ KD11 - Completion of Section 6, (1949d)			
KD_5740	KD9 - Completion of Section 4, (1739d)	0%	0d		30-Sep-16*	-455d											◆ KD9 - Completion of Section 4, (1739d)			
TPCWAW																				
TPCWAW ELS Works - East Section																				
S5_61070	Demolition of bulkhead wall TPCWAE/TPCWAW	100%	34d	06-Dec-15 A	09-Jan-16 A												Demolition of bulkhead wall TPCWAE/TPCWAW			
S5_6180	East excavation to formation	100%	85d	18-Sep-15 A	24-Dec-15 A												East excavation to formation			
TPCWAW-CCT RC Structure, Base Slab																				
S5_60600	Waterproofing + Base slab Bay 1 (incl. removal of 7th layer struts after casting of base slab)	100%	15d	03-Dec-15 A	23-Dec-15 A												Waterproofing + Base slab Bay 1 (incl. removal of 7th layer struts after casting of base slab)			
S5_60620	Waterproofing + Base slab Bay 5	100%	11d	05-Dec-15 A	29-Dec-15 A												Waterproofing + Base slab Bay 5			
S5_60625	Waterproofing + Base slab Bay 6	100%	11d	16-Dec-15 A	19-Jan-16 A												Waterproofing + Base slab Bay 6			
S5_60630	Waterproofing + Base slab Bay 7	100%	7d	07-Jan-16 A	05-Feb-16 A												Waterproofing + Base slab Bay 7			
S5_60635	Waterproofing + Base slab Bay 8	100%	6d	12-Jan-16 A	05-Feb-16 A												Waterproofing + Base slab Bay 8			
S5_61065	Waterproofing + Base slab Bay 9 (stitching with TPCWAE)	100%	6d	15-Jan-16 A	05-Feb-16 A												Waterproofing + Base slab Bay 9 (stitching with TPCWAE)			
TPCWAW-CCT RC Structure, Wall																				
S5_60670	Wall Bay 1 (+ repropping and removal of 5th & 6th struts)	100%	21d	15-Dec-15 A	10-Jan-16 A												Wall Bay 1 (+ repropping and removal of 5th & 6th struts)			
S5_60675	Wall Bay 2 (+ repropping and removal of 5th & 6th struts)	100%	10d	10-Dec-15 A	05-Jan-16 A												Wall Bay 2 (+ repropping and removal of 5th & 6th struts)			
S5_60680	Wall Bay 3 (+ repropping and removal of 5th & 6th struts)	100%	21d	10-Dec-15 A	07-Jan-16 A												Wall Bay 3 (+ repropping and removal of 5th & 6th struts)			
S5_60685	Wall Bay 4 (+ repropping and removal of 5th & 6th struts)	100%	22d	20-Dec-15 A	11-Jan-16 A												Wall Bay 4 (+ repropping and removal of 5th & 6th struts)			
S5_60690	Wall Bay 5 (+ removal of 5th strut)	100%	10d	02-Jan-16 A	29-Jan-16 A												Wall Bay 5 (+ removal of 5th strut)			
S5_60695	Wall Bay 6 (+ removal of 5th strut)	100%	7d	21-Jan-16 A	25-Feb-16 A												Wall Bay 6 (+ removal of 5th strut)			
S5_60700	Wall Bay 7 (+ removal of 5th strut)	100%	8d	16-Feb-16 A	25-Feb-16 A												Wall Bay 7 (+ removal of 5th strut)			
S5_60705	Wall Bay 8 (+ removal of 5th strut)	100%	9d	16-Feb-16 A	25-Feb-16 A												Wall Bay 8 (+ removal of 5th strut)			
S5_61075	Wall Bay 9 (+ removal of 5th strut)	100%	8d	16-Feb-16 A	25-Feb-16 A												Wall Bay 9 (+ removal of 5th strut)			
TPCWAW -Maintenance Walkway																				

- Remaining Work
- Actual Work
- Remaining Work
- Critical Remaining Work
- Milestone
- Summary
- Actual Work

1 of 3

China State Construction Engineering (Hong Kong) Ltd.

Contract No. HY/2009/15 - Central Wan Chai By Pass - Tunnel (Causeway Bay Typhoon Shelter Section)

WORKS PROGRAMME UPDATE

Prepared by Anthony Fesalbon			
Date	Revision	Checked	Approved
20-Aug-16	Progress Update	WC	WVSL
	(based on WP Rev. N-4th Submission)		

- Remaining Work
- Actual Work
- Remaining Work
- Critical Remaining Work
- Milestone
- Summary
- Actual Work
- Remaining Work

WORKS PROGRAMME UPDATE

Contract No. HY/2009/15 - Central Wan Chai Bay Pass - Tunnel (Causeway Bay Typhoon Shelter Section)
 China State Construction Engineering (Hong Kong) Ltd.

Date	20-Aug-16	Progress Update	(based on WP Rev. N-4th Submission)
Revision	Checked	Approved	
Prepared by Anthony Fesalbon			

Activity ID	Activity Name	Physical % Complete	Original Duration	Start	Finish	Total	2016	2017														
							Dec	Jan	Feb	Mar	Apr	May	Jun	Jul	Aug	Sep	Oct	Nov	Dec	Jan	Feb	
S6_9086	TPCWAW - Maintenance walkway / profile barrier	100%	23d	20-Dec-15 A	23-Mar-16 A																	
TPCWAW-CCT RC Structure, OHVD																						
S5_60740	OHVD Bay 1	100%	12d	29-Dec-15 A	21-Jan-16 A																	
S5_61100	OHVD Bay 10	100%	7d	16-Feb-16 A	26-Feb-16 A																	
S5_60745	OHVD Bay 2	100%	12d	31-Dec-15 A	18-Jan-16 A																	
S5_60750	OHVD Bay 3	100%	12d	02-Jan-16 A	18-Jan-16 A																	
S5_60755	OHVD Bay 4	100%	12d	24-Dec-15 A	25-Jan-16 A																	
S5_60760	OHVD Bay 5	100%	12d	06-Jan-16 A	25-Jan-16 A																	
S5_61080	OHVD Bay 6	100%	9d	20-Jan-16 A	16-Feb-16 A																	
S5_61085	OHVD Bay 7	100%	9d	12-Feb-16 A	28-Feb-16 A																	
S5_61090	OHVD Bay 8	100%	9d	16-Feb-16 A	28-Feb-16 A																	
S5_61095	OHVD Bay 9	100%	9d	12-Feb-16 A	28-Feb-16 A																	
S5_61110	Shaft B Reinstatement - OHVD	100%	20d	20-Feb-16 A	22-Apr-16 A																	
TPCWAW - King Post Load Transfer / Waterproofing on Top Slab																						
S6_9135	Completion of Section 5 - TPCWAW Area (KD10), below -20MPD	100%	0d	09-Mar-16 A																		
S5_61120	Provide access to CWB (CC) Contractor - TPCWAW Area	100%	0d	29-Feb-16 A																		
S6_9055	Provide Access to WDII Contractor for bulkhead wall removal	100%	0d	29-Feb-16 A																		
S5_61105	Shaft B Reinstatement - Top Slab	100%	15d	14-Feb-16 A	29-Feb-16 A																	
S5_60810	Top slab Bay 1	100%	11d	19-Jan-16 A	23-Feb-16 A																	
S5_60875	Top slab Bay 10	100%	5d	20-Feb-16 A	09-Mar-16 A																	
S5_60815	Top slab Bay 2	100%	10d	08-Jan-16 A	02-Feb-16 A																	
S5_60820	Top slab Bay 3	100%	10d	11-Jan-16 A	16-Feb-16 A																	
S5_60825	Top slab Bay 4	100%	11d	19-Jan-16 A	24-Feb-16 A																	
S5_60830	Top slab Bay 5	100%	10d	19-Feb-16 A	29-Feb-16 A																	
S5_60835	Top slab Bay 6	100%	12d	20-Feb-16 A	02-Mar-16 A																	
S5_60840	Top slab Bay 7	100%	7d	20-Feb-16 A	05-Mar-16 A																	
S5_60845	Top slab Bay 8	100%	16d	20-Feb-16 A	05-Mar-16 A																	
S5_60865	Top slab Bay 9	100%	15d	20-Feb-16 A	07-Mar-16 A																	
TPCWAW - King Post Load Transfer / Waterproofing on Top Slab																						

Activity ID	Activity Name	Physical % Complete	Original Duration	Start	Finish	Total Float	2016												2017			
							Dec	Jan	Feb	Mar	Apr	May	Jun	Jul	Aug	Sep	Oct	Nov	Dec	Jan	Feb	
S5_61115	TPCWAW waterproofing - Bay 10	100%	2d	09-Mar-16 A	10-Mar-16 A																	
S6_9076	TPCWAW King post load transfer + waterproofing (except Bay 10)	100%	26d	04-Mar-16 A	29-Mar-16 A																	
TPCWAW Removal of Temporary Reclamation																						
S6_9140	Backfilling/Removal of ELS + Re charge water	100%	25d	30-Mar-16 A	04-Jul-16 A																	
S6_7550	Completion of Section 6- (KD11), above - 20mPD	0%	0d		30-Sep-16*	-245d																
S6_9105	Remove general fill/ seawall block (concurrent activities)	0%	25d	28-May-16 A	30-Sep-16	0d																
S6_9120	Saw cut diaphragm wall	44%	75d	20-Jul-16 A	30-Sep-16*	-244d																
Works in Portion 11 under KD9 (incl. Reinstatement of Vertical Seawall)																						
S6_9148	Completion of KD9- Works in Portion 11	0%	0d		30-Sep-16	-455d																
S6_9147	Reinstate ground level at Portion 11	10%	40d	26-Jul-16 A	30-Sep-16	-385d																
S6_9144	Reinstate vertical seawall (by marine plant)	0%	21d	23-Jul-16 A	30-Sep-16	-384d																

- Remaining Work
- Actual Work
- Remaining Work
- Critical Remaining Work
- Milestone
- Summary
- Actual Work

3 of 3

China State Construction Engineering (Hong Kong) Ltd.

Contract No. HY/2009/15 - Central Wan Chai By Pass - Tunnel (Causeway Bay Typhoon Shelter Section)

WORKS PROGRAMME UPDATE

Prepared by Anthony Fesalbon			
Date	Revision	Checked	Approved
20-Aug-16	Progress Update (based on WP Rev. N-4th Submission)	WC	WSL



Activity ID	Activity Name	Ori Dur	Rem Dur	Scheduled/ Actual Start	Scheduled/ Actual Finish	Total Float	Calendar	2016																
								October					November				December				2017			
								25	02	09	16	23	30	06	13	20	27	04	11	18	25	01	08	15
S10-T5-2040	Tunnel Portion 5 - Excavate to Level S3 and Install Strut S3 (54,700m3@ 1100m3/d)	57	30	09-Oct-16 A	18-Nov-16	-613	Calendar Day	Tunnel Portion 5 - Excavate to Level S3 and Install Strut S3 (54,700m3@ 1100m3/d), Tunnel Portion 5 - Excavate to Final Formation Level (26,000m3@ 1100m3/d)																
S10-T5-2050	Tunnel Portion 5 - Excavate to Final Formation Level (26,000m3@ 1100m3/d)	27	27	19-Nov-16	15-Dec-16	-613	Calendar Day	Tunnel Portion 5 - Excavate to Final Formation Level (26,000m3@ 1100m3/d)																
S10-T5-2100	Carry out temp bulkhead breaking through between TP5 and C1	35	32	12-Sep-16 A	22-Nov-16	-525	HK Working Day	Carry out temp bulkhead breaking through between TP5 and C1, Carry out temp bulkhead breaking through between TP5 and C1																
Bay 10 (3 Cells)																								
S10-T5-B10-1000	Base Slab - Trim Bored Pile & Blinding	7	7	26-Nov-16	03-Dec-16	-566	Calendar Day	Base Slab - Trim Bored Pile & Blinding, Base Slab - Trim Bored Pile & Blinding																
S10-T5-B10-1010	Base Slab - Waterproofing	4	4	09-Dec-16	13-Dec-16	-572	Calendar Day	Base Slab - Waterproofing, Base Slab - Waterproofing																
Bay 11 (3 Cells)																								
S10-T5-B11-1000	Base Slab - Trim Bored Pile & Blinding	7	7	24-Nov-16	01-Dec-16	-578	Calendar Day	Base Slab - Trim Bored Pile & Blinding, Base Slab - Trim Bored Pile & Blinding																
S10-T5-B11-1010	Base Slab - Waterproofing	4	4	01-Dec-16	05-Dec-16	-578	Calendar Day	Base Slab - Waterproofing, Base Slab - Waterproofing																
S10-T5-B11-1020	Base Slab - Rebar Fixing	10	10	05-Dec-16	15-Dec-16	-514	Calendar Day	Base Slab - Rebar Fixing, Base Slab - Rebar Fixing																
S10-T5-B11-1030	Base Slab - Concrete	1	1	15-Dec-16	16-Dec-16	-514	Calendar Day	Base Slab - Concrete, Base Slab - Concrete																
Bay 12 (3 Cells)																								
S10-T5-B12-1000	Base Slab - Trim Bored Pile & Blinding	7	7	22-Nov-16	29-Nov-16	-578	Calendar Day	Base Slab - Trim Bored Pile & Blinding, Base Slab - Trim Bored Pile & Blinding																
S10-T5-B12-1010	Base Slab - Waterproofing	4	4	05-Dec-16	09-Dec-16	-578	Calendar Day	Base Slab - Waterproofing, Base Slab - Waterproofing																
S10-T5-B12-1020	Base Slab - Rebar Fixing	10	10	09-Dec-16	19-Dec-16	-578	Calendar Day	Base Slab - Rebar Fixing, Base Slab - Rebar Fixing																
Section 11 of the Works - Remainder of Works																								
Demolition Works																								
S11-DEMO-1100	Demolition of existing WSD salt water pumping station	53	27	13-Jun-16 A	15-Nov-16	-294	Calendar Day	Demolition of existing WSD salt water pumping station, Demolition of existing WSD salt water pumping station																
S11-DEMO-1105	Remove marine deposit between the southern D-wall and old WSD salt water pumping station	30	30	16-Nov-16	16-Dec-16	-264	HK Working Day	Remove marine deposit between the southern D-wall and old WSD salt water pumping station																
S11-DEMO-1300	Demolition of abandoned seawall down to +1.5mPD - at the north of Ex-Salt Water Pump Station	12	12	10-Nov-16	22-Nov-16	-76	HK Working Day	Demolition of abandoned seawall down to +1.5mPD - at the north of Ex-Salt Water Pump Station																
Formation and Hard Landscaping Works																								
S11-FM-3000A	Tunnel Portion 3 & 4 Backfilling to -6mPD (90,000m3; 1,000m3/d)	102	56	09-Sep-16 A	16-Dec-16	-543	HK Working Day	Tunnel Portion 3 & 4 Backfilling to -6mPD (90,000m3; 1,000m3/d)																
Misc. Works																								
Removal of Temporary Reclamation																								
S11-RTC-3010	Works within Temp D-Wall - Public Fill above roof to formation level of rock mound (31,800m3@1,000m3/d)	34	24	20-Aug-16 A	12-Nov-16	-221	HK Working Day	Works within Temp D-Wall - Public Fill above roof to formation level of rock mound (31,800m3@1,000m3/d)																
S11-RTC-3020	Works within Temp D-Wall - Place rock mound to -6.0mPD (Grade 400: 6,000m3@500m3/d)	45	37	10-Oct-16 A	26-Nov-16	-568	HK Working Day	Works within Temp D-Wall - Place rock mound to -6.0mPD (Grade 400: 6,000m3@500m3/d)																
S11-RTC-3022	Works within Temp D-Wall - Place Type A Rock fill, Geotextile and Filter to -6.0mPD	6	6	28-Nov-16	03-Dec-16	-568	HK Working Day	Works within Temp D-Wall - Place Type A Rock fill, Geotextile and Filter to -6.0mPD																
S11-RTC-3023	Works within Temp D-Wall - Place Sorted Public Fill to -6.0mPD (18,600m3@1,550m3/d)	12	12	03-Dec-16	15-Dec-16	-568	HK Working Day	Works within Temp D-Wall - Place Sorted Public Fill to -6.0mPD (18,600m3@1,550m3/d)																
S11-RTC-3024	Works within Temp D-Wall - Place Type A Rockfill and Filter from -6.0mPD to -2.0mPD	6	6	16-Dec-16	22-Dec-16	-568	HK Working Day	Works within Temp D-Wall - Place Type A Rockfill and Filter from -6.0mPD to -2.0mPD																
S11-RTC-3025	Works within Temp D-Wall - Place Sorted Public Fill from -6.0mPD to -2.0mPD (17,500m3@1,450m3/d)	12	12	22-Dec-16	06-Jan-17	-568	HK Working Day	Works within Temp D-Wall - Place Sorted Public Fill from -6.0mPD to -2.0mPD (17,500m3@1,450m3/d)																
Soft Landscaping & Establishment Works																								
Section 12 of the Works - Protection and Preservation of Existing Trees																								
S12-0010	Protection and preservation of existing trees	2111	521	24-Feb-10 A	24-Mar-18	-570	Calendar Day	Protection and preservation of existing trees																

<ul style="list-style-type: none"> ◆ Milestone ◆ Critical Milestones ■ Current Works ■ Critical Works ■ Remaining Level of Effort 	<p>CHUN WO - CRGL</p> <p>JOINT VENTURE</p>	<p>CEDD CONTRACT NO. HK/2009/02</p> <p>WD II - Central Wanchai Bypass at Wan Chai East (Contract 2)</p> <p>3-MONTH ROLLING PROGRAMME (dd 20-Oct-16)</p>	Date	Revision	Checked	Approved
			07-Jul-16	Rev. 18		



Activity ID	Activity Name	Remaining Dur	Early Start	Early Finish	Total Float	2016	2017			
						Sep	Oct	Nov	Dec	Jan
HK/2012/08 Revised Works Programme Rev.8 (DD 31 August 2016)										
Dredging and Reclamation										
Marine Work Construction										
Zone A1										
Seawall Construction - Zone A1										
MAR10330	Zone A1 - Seawall - Install remaining seawall type 3 (after reinstatement of culver k and cooling mains)	11	31-Aug-16	10-Sep-16	-68					
MAR10340	Zone A1 - seawall - place type A behind seawall type 3	5	11-Sep-16	15-Sep-16	-68					
MAR10345	Zone A1 - seawall - lay geotextile and filter behind seawall Type 3	6	16-Sep-16	21-Sep-16	-68					
Others - Landing Steps										
MAR21360	Zone A2 - [summary] landing steps at seawall 4	77	05-Dec-16	11-Mar-17	-28					
MAR21380	Zone B - [summary] landing steps at seawall 5	73	05-Dec-16	07-Mar-17	-24					
MAR21400	Zone D - [summary] landing steps at seawall 9	70	05-Dec-16	03-Mar-17	-21					
MAR21420	Zone A2 - [summary] landing steps at seawall 13	73	05-Dec-16	07-Mar-17	-24					
Works for Section Completion										
Construction										
Section II - MVB Structure										
MVB Substructure - ELS & Structural Works for Portion A										
MVB Substructure - Structural Works for Portion A										
SII11250	Sec II - MVB A : Remove strut S1	7	20-Sep-16	26-Sep-16	-166					
SII11252	Sec II - MVB A : Remove bulkhead at east	46	20-Sep-16	04-Nov-16	-159					
SII11254	Sec II - MVB A : Remove bulkhead at west	46	02-Oct-16	16-Nov-16	-166					
SII11260	Sec II - MVB A : Construct Bay 14- B2M/F wall	6	29-Jul-16 A	05-Sep-16	-166					
SII11300	Sec II - MVB A : Construct Bay 15 - B2M/F OHVD	10	06-Sep-16	15-Sep-16	-166					
SII11420	Sec II - MVB A : Construct Bay 14a - B2M/F wall (adjacent to bulkhead)	13	12-Nov-16	24-Nov-16	-166					
SII11960	Sec II - MVB A : Construct Bay 15a - B2M/F OHVD (adjacent to bulkhead)	6	25-Nov-16	30-Nov-16	-166					
SII11980	Sec II - MVB A : Construct Bay 16 - Wall btw OHVD and Roof)	19	27-Sep-16	15-Oct-16	-131					
SII12140	Sec II - MVB A : Construct Bay 17 - Roof Slab	17	16-Oct-16	01-Nov-16	-127					
SII12160	Sec II - MVB A : Construct Bay 18 - Roof Slab	21	16-Oct-16	05-Nov-16	-131					
SII12340	Sec II - MVB A : Construct Bay 16a, 17a & 18a - Wall & Slab (Adjacent to bulkhead)	10	01-Dec-16	10-Dec-16	-166					
MVB Substructure - Other Works for Portion A										
SII11320	Sec II - MVB A: Remove Strut & flasework	7	11-Dec-16	17-Dec-16	-166					
MVB Substructure - ELS & Structural Works for Portion B										
MVB Substructure - Structural Works for Portion B										
SII11920	Sec II - MVB B: Construct Bay K - B2M/F Wall	16	01-Aug-16 A	15-Sep-16	-103					
SII11930	Sec II - MVB B: Construct Bay L - B2M/F Top Slab	14	11-Sep-16	24-Sep-16	-103					

Data Date:
31-Aug-16

- Current Milestone
- Actual Work
- Critical Remaining Work
- Remaining Work
- Remaining Level of Effort

3-Months Rolling Programme for Non-CRIII Area (Sep 2016-Nov 2016)
(Ref. to Revised Works Programme (Rev. 8))

Date	Revision	Checked	Approved
31-Aug-16	8		



Activity ID	Activity Name	Remaining Dur	Early Start	Early Finish	Total Float	2016				2017
						Sep	Oct	Nov	Dec	Jan
SII11940	Sec II - MVB B: Remove Strut SL1 & Concrete Backing	8	28-Sep-16	05-Oct-16	-103					
SII12080	Sec II - MVB B: Saw cut southern diaphragm wall	8	06-Oct-16	13-Oct-16	-103					
SII12360	Sec II - MVB B: Construct Bay M - B1/F Wall	26	14-Oct-16	08-Nov-16	-103					
SII12420	Sec II - MVB B: Construct Bay M - B1/F Top Slab	8	09-Nov-16	16-Nov-16	-103					
MVB Substructure - Other Works for Portion B										
SII12100	Sec III - MVB B: remove strut and flamework	12	17-Nov-16	30-Nov-16	-85					
SII12120	Sec II - MVB B: seal up temp access openings	12	01-Dec-16	12-Dec-16	-103					
MVB Substructure - Diaphragm Wall for Portion C										
MVB C - Sheetpile Installation										
SII10670	Sec II - MVB C - sheetpile wall installation	5	13-Aug-16 A	04-Sep-16	-112					
MVB Substructure - ELS & Structural Works for Portion C										
MVB Substructure - ELS for Portion C										
SII12020	Sec II - MVB C: Excavation down to +1.7mPD	6	11-Sep-16	16-Sep-16	-112					
SII12040	Sec II - MVB C: Install Strut S1	5	17-Sep-16	21-Sep-16	-112					
SII12060	Sec II - MVB C: Excavation down to formation (-1.8mPD/-3.0mPD)	7	22-Sep-16	28-Sep-16	-112					
SII12180	Sec II - MVB C: Cast Blinding layer & pile head treatment	8	29-Sep-16	06-Oct-16	-112					
SII12380	Sec III - MVB C: Remove bulhead wall between MVB plant room and Zone CW	20	14-Oct-16	02-Nov-16	-112					
SII12400	Sec III - MVB C: Remove bulhead wall between MVB plant room and MVB south	20	03-Nov-16	22-Nov-16	-112					
MVB Substructure - Structural Works for Portion C										
SII12200	Sec II - MVB C: Construct Slab B1/F	7	07-Oct-16	13-Oct-16	-112					
SII12220	Sec II - MVB C: Remove Strut S1	3	23-Nov-16	25-Nov-16	-112					
SII12240	Sec II - MVB C: Construct Wall of B1/F	9	26-Nov-16	04-Dec-16	-112					
SII12260	Sec II - MVB C: Construct Floor Slab of G/F	5	05-Dec-16	09-Dec-16	-112					
MVB Substructure - Other Works for Portion C										
SII12280	Sec II - MVB C: Remove all struts and Falsework	6	10-Dec-16	15-Dec-16	-112					
SII12300	Sec II - MVB C: seal up temp access openings	12	10-Dec-16	21-Dec-16	-112					
Section II A - CWB Tunnel & Slip Road Structures and Facilities										
CWB A2(2)										
CWB A2 (2) - ELS & Tunnel Structure										
CWB A2 - Tunnel Structure										
SIIA11700	Sec II A - CWB A2(2): base, wall, OHVD & roof (bay 1 -Adjacent to A1)	15	11-Jun-16 A	14-Sep-16	-97					
SIIA11750	Sec II A - CWB A2(2): base, wall, OHVD & roof (bay 2)	4	12-May-16 A	03-Sep-16	-93					
CWB A2 - Other Works										
SIIA12530	Sec II A - CWB A2(2) : waterproofing and backfill to +4.0mPD	45	15-Sep-16	29-Oct-16	-92					
CWB A2 (2) - Associated Facilities										
SIIA14320	Sec II A - CWB A2(2): Civil Provisions - lay screeding	7	08-Sep-16	14-Sep-16	-97					
SIIA14430	Sec II A - CWB A2(2): Civil Provisions - cast cable trough	8	15-Sep-16	22-Sep-16	-97					
CWB B & A2(1)										
CWB B - ELS & Tunnel Structure										
CWB B - ELS										



Activity ID	Activity Name	Remaining Dur	Early Start	Early Finish	Total Float	2016					2017	
						Sep	Oct	Nov	Dec	Jan		
CWB B - Inside Concrete Plug												
SIIA13662	Sec II A - CWB B Inside Concrete Plug: Cut and remove the excess blinding layer	18	23-Aug-16 A	17-Sep-16	-175	████████████████████						
SIIA13664	Sec II A - CWB B Inside Concrete Plug: Saw Cut the Base Slab of C4 Unit	18	27-Aug-16 A	21-Sep-16	-144	████████████████████						
SIIA13682	Sec II A - CWB B: Demolish concrete plug (near C4 unit)	25	13-Oct-16	06-Nov-16	-180		████████████████████					
CWB B - Outside Concrete Plug												
SIIA 15200	Sec II A - CWB B Outside Concrete Plug: Tunnel Formation Excavation	5	29-Aug-16 A	04-Sep-16	-180	████████						
SIIA 15220	Sec II A - CWB B Outside Concrete Plug: Vertical Blinding	1	05-Sep-16	05-Sep-16	-180	█						
SIIA 15260	Sec II A - CWB B Outside Concrete Plug: Remove struts & Sheetpile	17	06-Sep-16	22-Sep-16	-180	████████████████████						
CWB A2(1) & B - Tunnel Structure												
SIIA13570	Sec II A - CWB A2(1): Construct Bay 4 - Wall (remaining)	12	25-Oct-16	05-Nov-16	-186		████████████████████					
SIIA13572	Sec II A - CWB A2(1): Construct Bay 4 - OHVD	16	06-Nov-16	21-Nov-16	-186			████████████████████				
SIIA13574	Sec II A - CWB A2(1): Construct Bay 4 - Top Slab	14	22-Nov-16	05-Dec-16	-186				████████████████████			
SIIA13580	Sec II A - CWB B: Construct Bay 5 - Exhaust Duct Base Slab (South)	8	01-Sep-16*	08-Sep-16	0	████████						
SIIA13590	Sec II A - CWB B: Construct Bay 5 - Exhaust Duct Wall	8	17-Sep-16	24-Sep-16	-190		████████					
SIIA13600	Sec II A - CWB B: Construct Bay 6 - Base Slab	14	25-Sep-16	08-Oct-16	-190		████████████████████					
SIIA13610	Sec II A - CWB B: Construct Bay 6 - Wall	14	25-Oct-16	07-Nov-16	-181			████████████████████				
SIIA13620	Sec II A - CWB B: Construct Bay 6 - OHVD	13	11-Nov-16	23-Nov-16	-184			████████████████████				
SIIA13630	Sec II A - CWB B: Construct Bay 6 - Roof Slab	12	27-Nov-16	08-Dec-16	-187				████████████████████			
SIIA13640	Sec II A - CWB B: Construct Bay 7a - Base Slab	18	25-Sep-16	12-Oct-16	-190		████████████████████					
SIIA13645	Sec II A - CWB B: Remove Strut S2 & S3 and concrete packing (for Bay 4, 6 & 7a)	9	16-Oct-16	24-Oct-16	-190		████████					
SIIA13650	Sec II A - CWB B: Construct Bay 7a - Wall	17	25-Oct-16	10-Nov-16	-190			████████████████████				
SIIA13660	Sec II A - CWB B: Construct Bay 7a - OHVD	16	11-Nov-16	26-Nov-16	-190			████████████████████				
SIIA13680	Sec II A - CWB B: Construct Bay 7a - Top Slab	15	27-Nov-16	11-Dec-16	-190				████████████████████			
SIIA13700	Sec II A - CWB B: Construct Bay 7b - Base Slab	11	23-Sep-16	03-Oct-16	-180		████████					
SIIA13710	Sec II A - CWB B: Remove Strut S2 & S3 (for Bay 7b)	6	07-Oct-16	12-Oct-16	-180		████████					
SIIA13880	Sec II A - CWB B: Construct Bay 7b - Wall	11	07-Nov-16	17-Nov-16	-180			████████				
SIIA13900	Sec II A - CWB B: Construct Bay 7b - OHVD	10	18-Nov-16	27-Nov-16	-180			████████				
SIIA13920	Sec II A - CWB B: Construct Bay 7b - Top Slab	10	28-Nov-16	07-Dec-16	-180				████████			
CWB A2(1) & B - Other Works												
CWB A2(1) & B - Associated Facilities												
SIIA14460	Sec II A - CWB A2(1): Civil Provisions - lay screeding	7	06-Dec-16	12-Dec-16	-186				████████			
SIIA14480	Sec II A - CWB A2(1): Civil Provisions - cast cable trough	8	13-Dec-16	20-Dec-16	-186				████████			
SIIA14580	Sec II A - CWB B: Civil Provisions - lay screeding	6	12-Dec-16	17-Dec-16	-190				████████			
CWB C (W)												
CWB C(W) - ELS & Tunnel Structure												
CWB C(W) - ELS												
CWB C(W) - ELS Inside Concrete Plug												
SIIA 12210	Sec II A - CWB CW inside Concrete Plug: cut and remove 2m strip opening along bulkhead	6	31-Aug-16	05-Sep-16	-186	████████						
SIIA 12230	Sec II A - CWB CW inside Concrete Plug: cut and remove base slab of C4 unit	21	06-Sep-16	26-Sep-16	-186	████████████████████						
SIIA 12250	Sec II A - CWB CW inside Concrete Plug: cut and remove the excess blinding layer	9	25-Aug-16 A	08-Sep-16	874	████████						



Activity ID	Activity Name	Remaining Dur	Early Start	Early Finish	Total Float	2016				2017
						Sep	Oct	Nov	Dec	Jan
SIIA 12270	Sec II A - CWB CW inside Concret Plug: remove concrete bulkhead	20	19-Oct-16	07-Nov-16	-186					
CWB C(W) - ELS Outside Concrete Plug										
SIIA 13100	Sec II A - CWB CW outside Concrete Plug: Remove struts S3	4	30-Aug-16 A	03-Sep-16	-155					
SIIA 13120	Sec II A - CWB CW outside Concrete Plug: Install transverse strut	3	04-Sep-16	06-Sep-16	-155					
SIIA 13140	Sec II A - CWB CW outside Concrete Plug: Remove strut S1 & S2	11	07-Sep-16	17-Sep-16	-155					
SIIA 13160	Sec II A - Sec II A - CWB CW outside Concrete Plug: Tunnel formation excavation	4	25-Aug-16 A	03-Sep-16	-185					
SIIA 13180	Sec II A - CWB CW outside Concrete Plug: Exhaust duct formation excavation	5	05-Sep-16	09-Sep-16	-185					
SIIA 13200	Sec II A - CWB CW outside Concrete Plug: blinding layer and remove diagonal struts & sheetpile	16	10-Sep-16	25-Sep-16	-185					
CWB C(W) - Tunnel Structure										
SIIA12160	Sec II A - CWB CW: Construct Bay 1 - Base Slab	12	27-Sep-16	08-Oct-16	-186					
SIIA12180	Sec II A - CWB CW: Remove Struts S2 & S3	6	13-Oct-16	18-Oct-16	-186					
SIIA12300	Sec II A - CWB CW: Construct Bay 1 - Wall	8	08-Nov-16	15-Nov-16	-186					
SIIA12320	Sec II A - CWB CW: Construct Bay 1 - OHVD	10	18-Nov-16	27-Nov-16	-186					
SIIA12340	Sec II A - CWB CW: Construct Bay 1 - Top Slab	10	28-Nov-16	07-Dec-16	-186					
SIIA12380	Sec II A - CWB CW: Construct Bay 2b - Exhaust duct base slab	9	17-Sep-16	25-Sep-16	-165					
SIIA12400	Sec II A - CWB CW: Construct Bay 2b - Exhaust duct wall	8	26-Sep-16	03-Oct-16	-165					
SIIA12420	Sec II A - CWB CW: Construct Bay 2b - Tunnel base slab	13	04-Oct-16	16-Oct-16	-165					
SIIA12460	Sec II A - CWB CW: Construct Bay 2b - B1/F slab	8	27-Oct-16	03-Nov-16	-136					
SIIA12480	Sec II A - CWB CW: Construct Bay 2b - B1/F wall	9	04-Nov-16	12-Nov-16	-136					
SIIA12520	Sec II A - CWB CW: Construct Bay 2b - B1/F roof slab	11	13-Nov-16	23-Nov-16	-136					
SIIA12640	Sec II A - CWB CW: Construct Bay 2a & 2b - Wall	8	17-Oct-16	24-Oct-16	-165					
SIIA12700	Sec II A - CWB CW: Construct Bay 2a & 2b - OHVD	10	27-Oct-16	05-Nov-16	-165					
SIIA12720	Sec II A - CWB CW: Construct Bay 2a & 2b - Roof Slab	11	06-Nov-16	16-Nov-16	-165					
CWB C(W) - Other Works										
SIIA12200	Sec II A - CWB CW: Cut Down Dwall Head	21	08-Dec-16	28-Dec-16	-142					
SIIA12220	Sec II A - CWB CW: backfill to +4.0mPD	52	08-Dec-16	28-Jan-17	-150					
CWB C(W) - Associated Facilities										
SIIA14040	Sec II A - CWB CW: Civil Provisions - lay screeding	6	08-Dec-16	13-Dec-16	-186					
SIIA14220	Sec II A - CWB CW: Civil Provisions - cast cable trough	7	14-Dec-16	20-Dec-16	-186					
CWB C (E)										
CWB C(E) - ELS & Tunnel Structure										
CWB C(E) - ELS										
CWB C(E) - ELS - Bay 2 & 3										
SIIA15600	Sec II A - CWB CE: Demolish Bulkhead at C1 Interface	19	31-Aug-16	18-Sep-16	-166					
CWB C(E) - Tunnel Structure										
SIIA13255	Sec II A - CWB CE: Construct Bay 1 - Wall	46	26-Aug-16 A	15-Oct-16	-164					
SIIA13275	Sec II A - CWB CE: Construct Bay 1 - OHVD	14	18-Oct-16	31-Oct-16	-164					
SIIA13295	Sec II A - CWB CE: Construct Bay 1 - Roof Slab	13	01-Nov-16	13-Nov-16	-164					
SIIA13315	Sec II A - CWB CE: Construct Bay 2 - Wall	31	30-Aug-16 A	30-Sep-16	-151					
SIIA13335	Sec II A - CWB CE: Construct Bay 2 - OHVD	14	03-Oct-16	16-Oct-16	-151					



Activity ID	Activity Name	Remaining Dur	Early Start	Early Finish	Total Float	2016					2017	
						Sep	Oct	Nov	Dec	Jan		
SIIA13355	Sec II A - CWB CE: Construct Bay 2 - Roof Slab	15	17-Oct-16	31-Oct-16	-151							
SIIA13375	Sec II A - CWB CE: Construct Bay 3 - Base Slab	8	19-Sep-16	26-Sep-16	-166							
SIIA13395	Sec II A - CWB CE: Remove Strut S2 & S3 (for Bay 3)	5	27-Sep-16	01-Oct-16	-166							
SIIA13415	Sec II A - CWB CE: Construct Bay 3 - Wall	22	02-Oct-16	23-Oct-16	-166							
SIIA13435	Sec II A - CWB CE: Construct Bay 3 - OHVD	11	26-Oct-16	05-Nov-16	-166							
SIIA13455	Sec II A - CWB CE: Construct Bay 3 - Roof Slab	10	06-Nov-16	15-Nov-16	-166							
CWB C(E) - Other Works												
SIIA13300	Sec II A - CWB CE: Dismantle Scaffolding	24	16-Nov-16	09-Dec-16	-123							
SIIA13320	Sec II A - CWB CE: Cut Down Dwall Head	45	16-Nov-16	30-Dec-16	-144							
SIIA13325	Sec II A - CWB CE: backfill to +4.0mPD	47	16-Nov-16	01-Jan-17	-146							
CWB C(E) - Associated Facilities												
SIIA14222	Sec II A - CWB CE: Civil Provisions - lay screeding	7	16-Nov-16	22-Nov-16	-166							
SIIA14280	Sec II A - CWB CE: Civil Provisions - cast cable trough	8	23-Nov-16	30-Nov-16	-166							
CWB C - Exhaust Duct												
CWB C - Exhaust Duct Temp Work & ELS												
SIIA12900	Sec II A - Exhaust Duct at Slip Rd3: Excavation & Shoring - Bay 1	20	19-Sep-16*	08-Oct-16	-165							
SIIA12910	Sec II A - Exhaust Duct at Slip Rd3: Excavation & Shoring - Bay 2	15	19-Sep-16	03-Oct-16	-150							
SIIA12920	Sec II A - Exhaust Duct at Slip Rd3: Excavation & Shoring - Bay 3	10	07-Oct-16	16-Oct-16	-150							
CWB C - Exhaust Duct Structural Work												
SIIA12938	Sec II A - Exhaust Duct at Slip Rd3: Construt Bay 1 - base slab	5	09-Oct-16	13-Oct-16	-165							
SIIA12939	Sec II A - Exhaust Duct at Slip Rd 3: Demolish bulkhead between MVB south and exhaust duct	21	19-Oct-16	08-Nov-16	-165							
SIIA12940	Sec II A - Exhaust Duct at Slip Rd3: Construt Bay 1 - wall	13	09-Nov-16	21-Nov-16	-165							
SIIA13480	Sec II A - Exhaust Duct at Slip Rd3: Construt Bay 1 - roof slab	8	22-Nov-16	29-Nov-16	-165							
SIIA13520	Sec II A - Exhaust Duct at Slip Rd3: Construt Bay 2 - base slab	5	04-Oct-16	08-Oct-16	-122							
SIIA13540	Sec II A - Exhaust Duct at Slip Rd3: Construt Bay 2 - wall & roof slab	9	09-Oct-16	17-Oct-16	-122							
SIIA13560	Sec II A - Exhaust Duct at Slip Rd3: Construt Bay 3 - base slab	5	17-Oct-16	21-Oct-16	-150							
SIIA13575	Sec II A - Exhaust Duct at Slaip Rd 3: Demolish bulkhead at C1	15	22-Oct-16	05-Nov-16	-150							
SIIA13960	Sec II A - Exhaust Duct at Slip Rd3: Construt Bay 3 - wall & roof slab	9	06-Nov-16	14-Nov-16	-150							
CWB C - Exhaust Duct Others												
SIIA12950	Sec II A - Exhaust Duct at Slip Rd3: curing and dismantle formwork / falsework	12	15-Nov-16	26-Nov-16	-93							
SIIA12952	Sec II A - Exhaust Duct at Slip Rd3: Backfilling	15	18-Nov-16	02-Dec-16	-93							
CWB D - Slip Road 1												
CWB D - Slip Road 1 - ELS & Tunnel Structure												
CWB D - Slip Road 1 - ELS												
CWB D - SR1 - ELS - Bay 1 & 2												
SIIA 12582	Sec II A - CWB SR1 Concrete Plug: Saw cut to formation	26	31-Aug-16	25-Sep-16	-172							
SIIA 12584	Sec II A - CWB SR1 Concrete Plug: Remove concrete bulkhead	26	26-Sep-16	21-Oct-16	-172							
SIIA 12622	Sec II A - CWB SR1 Bay 1&2: 2nd layer excavation & strutting	9	24-Aug-16 A	08-Sep-16	-142							
SIIA 12642	Sec II A - CWB SR1 Bay 1&2: Formation excavation	9	09-Sep-16	17-Sep-16	-142							
CWB D - SR1 - ELS - Bay 3												



Activity ID	Activity Name	Remaining Dur	Early Start	Early Finish	Total Float	2016					2017	
						Sep	Oct	Nov	Dec	Jan		
SIIA 12590	Sec II A - CWB SR1 Bay 3: Blinding Layer	3	31-Aug-16	02-Sep-16	-151							
CWB D - Slip Road 1 - Tunnel Structure												
SIIA13060	Sec II A - CWB SR1: Construct Bay 1 - Base Slab	13	22-Oct-16	03-Nov-16	-172							
SIIA13070	Sec II A - CWB SR1: Remove Strut S1 & S2	5	07-Nov-16	11-Nov-16	-172							
SIIA13080	Sec II A - CWB SR1: Construct Bay 1 - Roof Slab	13	12-Nov-16	24-Nov-16	-172							
SIIA13220	Sec II A - CWB SR1: Construct Bay 2 - Base Slab	15	18-Sep-16	02-Oct-16	-142							
SIIA13230	Sec II - CWB SR1: Remove Strut S1 & S2	4	06-Oct-16	11-Oct-16	-118							
SIIA13240	Sec II A - CWB SR1: Construct Bay 2 - Roof Slab	16	12-Oct-16	27-Oct-16	-144							
SIIA13260	Sec II A - CWB SR1: Construct Bay 3 - Trough Base Slab	7	03-Sep-16	09-Sep-16	-151							
SIIA13280	Sec II A - CWB SR1: Construct Bay 3 - Trough Wall	7	18-Sep-16	24-Sep-16	-151							
SIIA13380	Sec II A - CWB SR1: Construct Bay 3 - Base Slab	14	25-Sep-16	08-Oct-16	-151							
SIIA13440	Sec II A - CWB SR1: Construct Bay 3 - Roof Slab	18	17-Oct-16	03-Nov-16	-151							
SIIA13460	Sec II A - CWB SR1: Construct Bay 4 - Roof Slab	18	17-Oct-16	03-Nov-16	-151							
SIIA13940	Sec II A - CWB SR1: Cut Down Dwall Head	55	25-Nov-16	18-Jan-17	-120							
CWB D - Associated Facilities												
SIIA12580	Sec II A - CWB SR1: Civil Provisions - lay screeding	7	25-Nov-16	01-Dec-16	-172							
SIIA14000	Sec II A - CWB SR1: Civil Provisions - cast cable trough	8	29-Nov-16	06-Dec-16	-172							
CWB D - Slip Road 1 - Trough / Retaining Wall												
CWB D - Slip Road 1 - Trough/Retaining Wall Temp Work & ELS												
SIIA12760	Sec II A - CWB SR1 Trough & RW: install sheetpile	13	05-Sep-16*	17-Sep-16	-157							
SIIA12780	Sec II A - CWB SR1 Trough & RW: Excavation & Shoring	23	18-Sep-16	10-Oct-16	-157							
CWB D - Slip Road 1 - Trough/Retaining Wall Structure												
SIIA12800	Sec II A - CWB SR1 Trough & RW: Trough Structure (bay 1)	12	11-Oct-16	22-Oct-16	-157							
SIIA13720	Sec II A - CWB SR1 Trough & RW: Trough Structure (bay 2)	12	23-Oct-16	03-Nov-16	-157							
SIIA13740	Sec II A - CWB SR1 Trough & RW: Trough Structure (bay 3)	12	29-Oct-16	09-Nov-16	-157							
SIIA13760	Sec II A - CWB SR1 Trough & RW: construct upstand wall along top of Trough Structure	12	03-Nov-16	14-Nov-16	-157							
SIIA13780	Sec II A - CWB SR1 Trough & RW: install waling	7	15-Nov-16	21-Nov-16	-157							
SIIA13800	Sec II A - CWB SR1 Trough & RW: Retaining Walls RW3 (bay 1)	12	25-Oct-16	05-Nov-16	-152							
SIIA13820	Sec II A - CWB SR1 Trough & RW: Retaining Walls RW3 (bay 2)	12	05-Nov-16	16-Nov-16	-152							
SIIA13840	Sec II A - CWB SR1 Trough & RW: Retaining Walls RW3 (bay 3)	12	25-Oct-16	05-Nov-16	-152							
SIIA13860	Sec II A - CWB SR1 Trough & RW: Retaining Walls RW4 (bay 1)	12	05-Nov-16	16-Nov-16	-152							
CWB D - Slip Road 1 - Trough/ Retaining Wall Other Works												
SIIA13865	Sec II A - CWB SR1: backfill to +4.0mPD	38	17-Nov-16	03-Jan-17	-111							
Section III A - Road A2, A4, A5, Area 11; Implement 2nd Stage ITA												
Roadwork & Utilities at A1												
SIIIA10260	Sec III A - roadwork and utilities (Zone A1) - Backfill to pavement founding level	42	31-Aug-16	21-Oct-16	-69							
SIIIA10280	Sec III A - roadwork and utilities (Zone A1) - storm water drain & sub-soil drain	42	09-Sep-16	31-Oct-16	-69							
SIIIA10300	Sec III A - roadwork and utilities (Zone A1) - Fresh watermain & Irrigation Mains	42	22-Sep-16	11-Nov-16	-69							
SIIIA10320	Sec III A - roadwork and utilities (Zone A1) - Gas main	42	05-Oct-16	23-Nov-16	-69							
SIIIA10340	Sec III A - roadwork and utilities (Zone A1) - HEC	42	15-Oct-16	02-Dec-16	-69							



Activity ID	Activity Name	Remaining Dur	Early Start	Early Finish	Total Float	2016					2017	
						Sep	Oct	Nov	Dec	Jan		
SIIIA10360	Sec III A - roadwork and utilities (Zone A1) - sub-base	42	25-Oct-16	12-Dec-16	-69							
SIIIA10380	Sec III A - roadwork and utilities (Zone A1) - road kerb	42	05-Nov-16	23-Dec-16	-69							
SIIIA10400	Sec III A - roadwork and utilities (Zone A1) - flexible pavement	42	22-Nov-16	12-Jan-17	-62							
SIIIA10420	Sec III A - roadwork and utilities (Zone A1) - construct u-channel	42	05-Nov-16	23-Dec-16	-58							
SIIIA10440	Sec III A - roadwork and utilities (Zone A1) - pave footpath concrete	42	02-Dec-16	23-Jan-17	-69							
SIIIA10460	Sec III A - roadwork and utilities (Zone A1) - Road Lighting, TCSS Ducts & Traffic Signs	40	12-Dec-16	03-Feb-17	-69							
SIIIA10480	Sec III A - roadwork and utilities (Zone A1) - lay footpath paving block	45	17-Nov-16	11-Jan-17	-60							
SIIIA10500	Sec III A - roadwork and utilities (Zone A1) - Road sign and road marking	40	03-Dec-16	21-Jan-17	-62							
Roadwork & Utilities at A2												
SIIIA10580	Sec III A - roadwork and utilities (Zone A2) - Backfill to pavement founding level	40	11-Oct-16	25-Nov-16	-76							
SIIIA10600	Sec III A - roadwork and utilities (Zone A2) - storm water drain & sub-soil drain	40	20-Oct-16	05-Dec-16	-76							
SIIIA10620	Sec III A - roadwork and utilities (Zone A2) - Fresh watermain & Irrigation Mains	40	01-Nov-16	16-Dec-16	-76							
SIIIA10640	Sec III A - roadwork and utilities (Zone A2) - Gas main	40	08-Nov-16	23-Dec-16	-76							
SIIIA10660	Sec III A - roadwork and utilities (Zone A2) - HEC	40	15-Nov-16	03-Jan-17	-76							
SIIIA10680	Sec III A - roadwork and utilities (Zone A2) - sub-base	40	22-Nov-16	10-Jan-17	-76							
SIIIA10700	Sec III A - roadwork and utilities (Zone A2) - road kerb	40	01-Dec-16	19-Jan-17	-76							
SIIIA10720	Sec III A - roadwork and utilities (Zone A2) - flexible pavement	50	10-Dec-16	14-Feb-17	-76							
SIIIA10740	Sec III A - roadwork and utilities (Zone A2) - construct u-channel	50	29-Nov-16	02-Feb-17	-68							
SIIIA10760	Sec III A - roadwork and utilities (Zone A2) - pave footpath concrete	40	08-Dec-16	26-Jan-17	-74							
SIIIA10800	Sec III A - roadwork and utilities (Zone A2) - lay footpath paving block	40	10-Dec-16	02-Feb-17	-74							
Roadwork & Utilities at D												
SIIIA11090	Sec III A - roadwork and utilities (Zone D) - backfill to pavement founding level	50	08-Dec-16	11-Feb-17	-111							
SIIIA11100	Sec III A - roadwork and utilities (Zone D) - storm water drain & sub-soil drain	50	14-Dec-16	17-Feb-17	-111							
SIIIA11110	Sec III A - roadwork and utilities (Zone D) - Fresh watermain & Irrigation Mains	50	14-Dec-16	17-Feb-17	-107							
SIIIA11120	Sec III A - roadwork and utilities (Zone D) - Gas main	50	14-Dec-16	17-Feb-17	-103							
SIIIA11130	Sec III A - roadwork and utilities (Zone D) - HEC	50	14-Dec-16	17-Feb-17	-103							
Box Culvert L1 & FRP-L - Bay 8												
Box Culvert L1 & FRP-L - Bay 8 Structure												
CUL11320	Culvert L - bay 8 - construct pile cap	23	25-Jul-16 A	22-Sep-16	6							
CUL11322	Culvert L - bay 8 - construct base slab	26	23-Sep-16	18-Oct-16	6							
CUL11326	Culvert L - Bay 8 - construct wall	21	19-Oct-16	08-Nov-16	6							
CUL11328	Culvert L - bay 8 - construct top slab	11	09-Nov-16	19-Nov-16	6							
Box Culvert L1 & FRP-L - Bay 8 Others												
CUL11340	Culvert L - bay 8 - backfill above box section	12	21-Nov-16	03-Dec-16	5							
Section VI D - Area 8B & 10												
WDII Box 1 Construction												
WDII Box 1 Existing Pile Head and Dry Dock												
WD-C3054	Sec VID - Install rebar & formwork at Wall 12	24	09-Sep-16*	02-Oct-16	-175							
WD-C3056	Sec VID - Install rebar & formwork at Wall BH	24	16-Sep-16	09-Oct-16	-168							
WD-C3058	Sec VID - Install rebar & formwork at Wall 15 & 16	24	23-Sep-16	16-Oct-16	-175							



Activity ID	Activity Name	Remaining Dur	Early Start	Early Finish	Total Float	2016				2017
						Sep	Oct	Nov	Dec	Jan
WD-C3072	Sec VID - Formwork striking, tie bolt hole and waterproofing	20	18-Aug-16 A	19-Sep-16	-178	[Red bar from Sep 18 to Sep 19]				
WD-C3092	Sec VID - Install internal strutting S1	9	22-Sep-16	30-Sep-16	-178	[Red bar from Sep 22 to Sep 30]				
WD-C3112	Sec VID - Install buoyancy tank	9	01-Oct-16	09-Oct-16	-178	[Red bar from Oct 01 to Oct 09]				
WD-C3132	Sec VID - Install ballast tanks inside precast box I and internal strut S2	10	10-Oct-16	19-Oct-16	-178	[Red bar from Oct 10 to Oct 19]				
WDII Box 1 ELS										
WD-C3998	Sec VIC - Install middle strut S2 at -6.5mPD	14	30-Aug-16 A	13-Sep-16	-179	[Red bar from Sep 13 to Sep 13]				
WD-C4060	Sec VIC - Excavation of rock fill down to -11.5mPD	8	14-Sep-16	21-Sep-16	-179	[Red bar from Sep 14 to Sep 21]				
WD-C4070	Sec VIC - Install waling WB4 at -10.6mPD	7	22-Sep-16	28-Sep-16	-179	[Red bar from Sep 22 to Sep 28]				
WD-C4080	Sec VIC - 3rd Layer of Strut	9	29-Sep-16	07-Oct-16	-179	[Red bar from Sep 29 to Oct 07]				
WD-C4120	Sec VIC - Joint Survey of excavated level	2	08-Oct-16	09-Oct-16	-179	[Red bar from Oct 08 to Oct 09]				
WD-C4140	Sec VIC - Tremie concrete at bottom level	5	10-Oct-16	14-Oct-16	-179	[Red bar from Oct 10 to Oct 14]				
WD-C4160	Sec VIC - Joint Survey of concrete level	2	15-Oct-16	16-Oct-16	-179	[Red bar from Oct 15 to Oct 16]				
WD-C4180	Sec VIC - Remove Strut S2	2	17-Oct-16	18-Oct-16	-179	[Red bar from Oct 17 to Oct 18]				
WD-C4190	Sec VIC - Cut bored pile casing	2	19-Oct-16	20-Oct-16	-179	[Red bar from Oct 19 to Oct 20]				
WDII Box 1 Bottom Slab										
WD-C5040	Sec VI D - tow bottom slab to position	2	21-Oct-16	22-Oct-16	-179	[Red bar from Oct 21 to Oct 22]				
WDII Box 1 Remaining Structure										
WD-C6040	Sec VID - Concreting Wall 12, 13, 15 & 16 and Wall BH	4	23-Oct-16	26-Oct-16	-179	[Red bar from Oct 23 to Oct 26]				
WD-C6060	Sec VID - Construct roof slab	10	27-Oct-16	05-Nov-16	-179	[Red bar from Oct 27 to Nov 05]				
WD-C6080	Sec VID - Extension of sacrificial wall (2.3m)	17	06-Nov-16	22-Nov-16	-179	[Red bar from Nov 06 to Nov 22]				
WD-C6100	Sec VID - Balasting and final sink Box 1 to -10.0mPD	3	23-Nov-16	25-Nov-16	-179	[Red bar from Nov 23 to Nov 25]				
WD-C6120	Sec VID - Constrcut remaining roof slab	8	26-Nov-16	03-Dec-16	-179	[Red bar from Nov 26 to Dec 03]				
WD-C6140	Sec VID - Backfilling lean concreting to -6.5mPD	3	04-Dec-16	06-Dec-16	-179	[Red bar from Dec 04 to Dec 06]				
WD-C6160	Sec VID - Remove ELS and cut off pipe pile head	16	07-Dec-16	22-Dec-16	-179	[Red bar from Dec 07 to Dec 22]				
Section IV - Slip Road 3										
Roadwork & Utilities (Lung King Street)										
SIV11000	Sec IV - Stage 1: Roadwork & Utilities (MH1.2 to MH1.3)	1	09-May-16 A	31-Aug-16	-64	[Red bar from May 09 to Aug 31]				
SIV11020	Sec IV - Stage 2: Roadwork & Utilities (MH1.3 to MH1.4)	31	01-Sep-16	08-Oct-16	-64	[Red bar from Sep 01 to Oct 08]				
SIV11060	Sec IV - Stage 3: Roadwork & Utilities (MH1.4 to MH1.5)	13	11-Oct-16	25-Oct-16	-64	[Red bar from Oct 11 to Oct 25]				
Section VII - Remainder Works										
Retaining Wall RW5 Construction										
SVII10660	Sec VII - Retaining Wall RW5 (bay 1) - construct base slab and wall	18	07-Nov-16	26-Nov-16	-18	[Red bar from Nov 07 to Nov 26]				
SVII10680	Sec VII - Retaining wall RW5 (bay 2) - construct base slab and wall	18	28-Nov-16	17-Dec-16	-18	[Red bar from Nov 28 to Dec 17]				
SVII10800	Sec VII - Retaining wall RW5 (bay 3) - construct base slab and wall	18	07-Nov-16	26-Nov-16	-18	[Red bar from Nov 07 to Nov 26]				
SVII10820	Sec VII - Retaining wall RW5 (bay 4) - construct base slab and wall	18	28-Nov-16	17-Dec-16	-18	[Red bar from Nov 28 to Dec 17]				
Landing Steps Construction										
Landing Steps BSW13										
SVII10700	Sec VII - Landing steps (BSW13) - construct mass concrete coping	26	05-Dec-16	06-Jan-17	-28	[Red bar from Dec 05 to Jan 06]				
Landing Steps BSW4										
SVII10940	Sec VII - Landing steps (BSW4) - construct mass concrete coping	26	05-Dec-16	06-Jan-17	-28	[Red bar from Dec 05 to Jan 06]				



Activity ID	Activity Name	Remaining Dur	Early Start	Early Finish	Total Float	2016					2017	
						Sep	Oct	Nov	Dec	Jan		
Landing Steps BSW5												
SVIII1020	Sec VII - Landing steps (BSW5) - construct mass concrete coping	26	05-Dec-16	06-Jan-17	-24							
Landing Steps BSW9												
SVIII1100	Sec VII - Landing steps (BSW9) - construct mass concrete coping	24	05-Dec-16*	04-Jan-17	-21							
Promenade Seawall Parapet Construction												
SVII10400	Sec VII - construct block seawall mass concrete coping & backfill to pavement formation	90	03-Oct-16*	19-Jan-17	-9							
SVII10600	Sec VII - construct seawall parapet (Zone A1, A2 & B)	90	13-Dec-16	05-Apr-17	-9							
Section VIII - Landscape Softworks												
Soft Landscaping Works												
SVIII10040	Sec VIII - Trees Planting	163	31-Aug-16	20-Mar-17	0							
Section X - Protection & Preservation of Trees												
Soft Landscaping Works												
SX10020	Sec X - Protection & Preservation of Trees	326	31-Jan-13 A	22-Jul-17	0							
VO : Construction of Box 4A & 4B												
Box 4A												
4A10000	Concrete Fill with 300 dia. carrier drain (Approx. 50m)	16	26-Sep-16*	11-Oct-16	-152							
4A10020	Internal Suspended Slab & Internal Wall	24	30-Sep-16	23-Oct-16	-152							
Box 4B												
4B10000	Concrete Fill with 300 dia. carrier drain (Approx. 50m)	16	12-Oct-16	27-Oct-16	-144							
4B10010	Internal Suspended Slab & Internal Wall	24	24-Oct-16	16-Nov-16	-152							

Activity ID	Activity Name	Original Duration	Start	Finish	2016				2017	
					Oct	Nov	Dec	Jan	Feb	
Total		80d	20-Sep-16 A	11-Feb-17						
TS3E - 3 Months Rolling Programme - 2016-10		80d	20-Sep-16 A	11-Feb-17						
West Bound Tunnel (W/B)		71d	16-Oct-16 A	30-Jan-17						
Diaphragm Wall Remedial Works & Reactive Cementitious Coating Works		44d	16-Oct-16 A	24-Dec-16						
A1020	PU Injection to Sto Water Leakage at CJ Location	40d	16-Oct-16 A	24-Nov-16						
A1030	Patching Up Works	20d	24-Nov-16	14-Dec-16						
A1040	Apply Reactive Cementitious Coating	10d	14-Dec-16	24-Dec-16						
Outstanding Reinforced Concrete Works		86d	06-Nov-16	30-Jan-17						
Stitching of TS2 & TS3E		48d	06-Nov-16	23-Dec-16						
A1050	TS2/TS3E - Base Slab (Part 1 - 6.5 m Length)	8d	06-Nov-16*	13-Nov-16						
A1060	TS2/TS3E - Base Slab (Part 2 - 10.5 m Length)	8d	14-Nov-16	21-Nov-16						
A1070	TS2/TS3E - Wall	8d	22-Nov-16	29-Nov-16						
A1080	TS2/TS3E - OHVD	10d	30-Nov-16	09-Dec-16						
A1090	TS2/TS3E - Roof Slab	14d	10-Dec-16	23-Dec-16						
Profile Barrier & Maintenance Walkway		70d	22-Nov-16	30-Jan-17						
A1100	Profile Barrier 60m	15d	22-Nov-16	06-Dec-16						
A1110	Maintenance Walkway 70m	15d	07-Dec-16	21-Dec-16						
A1120	Making Half Round Channel for the Cable Trough (2 x 90m)	12d	22-Dec-16	02-Jan-17						
A1130	Install Precast Concrete Covers on the Cable Trough (2 x 90m)	8d	23-Jan-17	30-Jan-17						
Outstanding Soffit of CP32		21d	19-Nov-16	09-Dec-16						
A1140	Erection of CP32 Falsework	8d	19-Nov-16	26-Nov-16						
A1150	Reinforcement Bar Fixing & Concreting	8d	02-Dec-16	09-Dec-16						
Remaining Works		36d	24-Dec-16	28-Jan-17						
A1160	PU Injection grout for Tunnel Structure	20d	24-Dec-16	12-Jan-17						
A1170	General Cleansing Works for Tunnel	10d	13-Jan-17	22-Jan-17						
A1180	Joint Site Walk	5d	23-Jan-17	27-Jan-17						
A1190	Hand Over Date	1d	28-Jan-17	28-Jan-17						
East Bound Tunnel (E/B)		80d	20-Sep-16 A	11-Feb-17						
A1200	Bulkhead Removal of TS2/TS3E (Completed)	27d	20-Sep-16 A	15-Oct-16 A						
Diaphragm Wall Remedial Works & Reactive Cementitious Coating Works		104d	05-Oct-16 A	11-Feb-17						
A1210	Hand Trimming & Water Jet Cleansing of Loose Material on Diaphragm Wall Surface	70d	05-Oct-16 A	13-Dec-16						
A1220	PU Injection to Sto Water Leakage at CJ Location	40d	14-Dec-16	22-Jan-17						
A1230	Patching Up Works	20d	23-Jan-17	11-Feb-17						
Outstanding Reinforced Concrete Works		74d	16-Nov-16	28-Jan-17						
Stitching of TS2 & TS3E		48d	16-Nov-16	02-Jan-17						
A1250	TS2/TS3E - Base Slab (Part 1 - 6.5 m Length)	8d	16-Nov-16*	23-Nov-16						
A1260	TS2/TS3E - Base Slab (Part 2 - 10.5 m Length)	8d	24-Nov-16	01-Dec-16						
A1270	TS2/TS3E - Wall	8d	02-Dec-16	09-Dec-16						
A1280	TS2/TS3E - OHVD	10d	10-Dec-16	19-Dec-16						
A1290	TS2/TS3E - Roof Slab	14d	20-Dec-16	02-Jan-17						
Profile Barrier & Maintenance Walkway		58d	02-Dec-16	28-Jan-17						
A1310	Profile Barrier 120m	25d	02-Dec-16	26-Dec-16						
A1320	Maintenance Walkway 80m	18d	27-Dec-16	13-Jan-17						

- █ Actual Work
- █ Remaining Work
- █ Critical Remaining Work
- ◆ Milestone

Date	Revision	Checked	Approved
20-Oct-16	Updated to 20th Oct 2016	DML/WC	

Activity ID	Activity Name	Original Duration	Start	Finish	2016												2017	
					Oct	Nov	Dec	Jan	Feb									
A1330	Making Half Round Channel for the Cable Trough (2 x 90m)	15d	14-Jan-17	28-Jan-17														
Remaining Works		30d	03-Jan-17	01-Feb-17														
A1340	PU Injection grout for Tunnel Structure	20d	03-Jan-17	22-Jan-17														
A1350	General Cleansing Works for Tunnel	10d	23-Jan-17	01-Feb-17														

Activity ID	Activity Name	Original Duration	Start	Finish	2016				2017	
					Oct	Nov	Dec	Jan	Feb	
Total		139d	21-Aug-16 A	05-Jan-17						
TS3W - 3 Months Rolling Programme - 2016-10		139d	21-Aug-16 A	05-Jan-17						
CCT		139d	21-Aug-16 A	05-Jan-17						
Northern & Southern Tunnel		108d	21-Aug-16 A	05-Jan-17						
Zone E1		70d	21-Aug-16 A	21-Nov-16						
Bay 1		70d	21-Aug-16 A	21-Nov-16						
TS3W_2100	Bay 1 - Break Trough Bulkhead Bay 1N & 1S	21d	20-Sep-16 A	20-Nov-16						
TS3W_2090	Bay 1 - Spray Type Waterproofing, Protection Board & Backfilling	10d	31-Oct-16	09-Nov-16						
Bay N1		63d	21-Aug-16 A	21-Nov-16						
TS3W_2130	Bay N1 - Utility Trough	4d	21-Aug-16 A	21-Nov-16						
TS3W_2150	Bay N1 - Roof Slab	10d	24-Sep-16 A	25-Oct-16 A						
Bay S1		26d	21-Aug-16 A	03-Nov-16						
TS3W_2180	Bay S1 - Utility Trough	4d	21-Aug-16 A	03-Nov-16						
TS3W_2200	Bay S1 - Roof Slab	10d	23-Sep-16 A	11-Oct-16 A						
Bay 2		51d	21-Aug-16 A	09-Nov-16						
TS3W_2230	Bay 2 - Spray Type Waterproofing, Protection Board & Backfilling	10d	31-Oct-16	09-Nov-16						
Bay N2		51d	21-Aug-16 A	06-Nov-16						
TS3W_2260	Bay N2 - Utility Trough	4d	21-Aug-16 A	06-Nov-16						
TS3W_2280	Bay N2 - Roof Slab	10d	30-Aug-16 A	31-Oct-16 A						
TS3W_2270	Bay N2 - OHVD Slab & Hanger Wall	11d	01-Sep-16 A	09-Oct-16 A						
Bay S2		51d	21-Aug-16 A	06-Nov-16						
TS3W_2310	Bay S2 - Utility Trough	4d	21-Aug-16 A	06-Nov-16						
TS3W_2330	Bay S2 - Roof Slab	10d	25-Aug-16 A	28-Oct-16 A						
TS3W_2320	Bay S2 - OHVD Slab & Hanger Wall	11d	29-Aug-16 A	03-Oct-16 A						
Zone E2		55d	21-Aug-16 A	25-Nov-16						
Bay 3		55d	21-Aug-16 A	25-Nov-16						
TS3W_2360	Bay 3 - Spray Type Waterproofing, Protection Board & Backfilling	10d	31-Oct-16	09-Nov-16						
Bay N3		55d	21-Aug-16 A	25-Nov-16						
TS3W_2390	Bay N3 - Utility Trough	4d	21-Aug-16 A	03-Nov-16						
TS3W_2410	Bay N3 - Roof Slab	10d	13-Sep-16 A	25-Nov-16						
TS3W_2400	Bay N3 - OHVD Slab & Hanger Wall	11d	20-Sep-16 A	16-Oct-16 A						
Bay S3		53d	23-Aug-16 A	22-Nov-16						
TS3W_2440	Bay S3 - Utility Trough	4d	23-Aug-16 A	08-Nov-16						
TS3W_2450	Bay S3 - OHVD Slab & Hanger Wall	11d	13-Sep-16 A	14-Oct-16 A						
TS3W_2460	Bay S3 - Roof Slab	10d	28-Sep-16 A	22-Nov-16						
Zone W1		101d	25-Aug-16 A	05-Jan-17						
Bay 4		41d	25-Aug-16 A	19-Nov-16						
TS3W_2490	Bay 4 - Spray Type Waterproofing, Protection Board & Backfilling	10d	31-Oct-16	09-Nov-16						
Bay N4		38d	25-Aug-16 A	18-Nov-16						
TS3W_2620	Bay N4 - Utility Trough	4d	25-Aug-16 A	06-Nov-16						
TS3W_2610	Bay N4 - Wall 5	7d	22-Sep-16 A	03-Oct-16 A						
TS3W_2640	Bay N4 - Roof Slab	10d	26-Sep-16 A	18-Nov-16						
TS3W_2630	Bay N4 - OHVD Slab & Hanger Wall	11d	15-Oct-16 A	19-Oct-16 A						

- Actual Work
- Remaining Work
- Critical Remaining Work
- ◆ Milestone

Date	Revision	Checked	Approved
20-Oct-16	Updated to 20th Oct 2016	DML/WC	

Activity ID	Activity Name	Original Duration	Start	Finish	2016					2017	
					Oct	Nov	Dec	Jan	Feb		
Bay S4											
TS3W_2690	Bay S4 - Utility Trough	4d	25-Aug-16 A	06-Nov-16	Bay S4 - Utility Trough						
TS3W_2700	Bay S4 - Roof Slab	10d	13-Sep-16 A	19-Nov-16	Bay S4 - Roof Slab						
TS3W_2710	Bay S4 - OHVD Slab & Hanger Wall	11d	15-Sep-16 A	20-Oct-16 A	Bay S4 - OHVD Slab & Hanger Wall						
TS3W_2660	Bay S4 - Wall 6	7d	21-Sep-16 A	30-Sep-16 A							
Bay 5											
TS3W_2740	Bay 5 - Spray Type Waterproofing, Protection Board & Backfilling	10d	31-Oct-16	09-Nov-16	Bay 5 - Spray Type Waterproofing, Protection Board & Backfilling						
Bay N5											
TS3W_2760	Bay N5 - Utility Trough	4d	27-Aug-16 A	06-Nov-16	Bay N5 - Utility Trough						
TS3W_2770	Bay N5 - Wall 5	7d	05-Oct-16 A	09-Oct-16 A	Bay N5 - Wall 5						
TS3W_2780	Bay N5 - Roof Slab	10d	05-Oct-16 A	21-Nov-16	Bay N5 - Roof Slab						
TS3W_2790	Bay N5 - OHVD Slab & Hanger Wall	11d	23-Oct-16 A	26-Oct-16 A	Bay N5 - OHVD Slab & Hanger Wall						
Bay S5											
TS3W_2810	Bay S5 - Utility Trough	4d	27-Aug-16 A	03-Nov-16	Bay S5 - Utility Trough						
TS3W_2820	Bay S5 - Wall 6	7d	23-Sep-16 A	07-Oct-16 A							
TS3W_2830	Bay S5 - OHVD Slab & Hanger Wall	11d	04-Nov-16	14-Nov-16	Bay S5 - OHVD Slab & Hanger Wall						
TS3W_2840	Bay S5 - Roof Slab	10d	15-Nov-16	24-Nov-16	Bay S5 - Roof Slab						
Bay 6											
TS3W_2860	Bay 6 - Concrete Strut & Remove SL 6,7,8	7d	10-Sep-16 A	04-Oct-16 A	Cut & Remove SL 6,7,8						
TS3W_2870	Bay 6 - Spray Type Waterproofing, Protection Board & Backfilling	10d	07-Nov-16	16-Nov-16	Bay 6 - Spray Type Waterproofing, Protection Board & Backfilling						
Bay N6											
TS3W_2890	Bay N6 - Utility Trough	4d	06-Sep-16 A	13-Nov-16	Bay N6 - Utility Trough						
TS3W_2900	Bay N6 - Wall 5	7d	10-Oct-16 A	06-Nov-16	Bay N6 - Wall 5						
TS3W_2910	Bay N6 - OHVD Slab & Hanger Wall	11d	24-Nov-16	04-Dec-16	Bay N6 - OHVD Slab & Hanger Wall						
TS3W_2920	Bay N6 - Roof Slab	10d	05-Dec-16	14-Dec-16	Bay N6 - Roof Slab						
Bay S6											
TS3W_2940	Bay S6 - Utility Trough	4d	29-Aug-16 A	13-Nov-16	Bay S6 - Utility Trough						
TS3W_2950	Bay S6 - Wall 6	7d	09-Oct-16 A	06-Nov-16	Bay S6 - Wall 6						
TS3W_2960	Bay S6 - OHVD Slab & Hanger Wall	11d	27-Nov-16	07-Dec-16	Bay S6 - OHVD Slab & Hanger Wall						
TS3W_2970	Bay S6 - Roof Slab	10d	08-Dec-16	17-Dec-16	Bay S6 - Roof Slab						
Bay SR6											
SR8_S_1250	SR8 - Bay SR6 Base Slab	7d	17-Nov-16	23-Nov-16	SR8 - Bay SR6 Base Slab						
SR8_S_1260	SR8 - Bay SR6 Wall	7d	18-Dec-16	24-Dec-16	SR8 - Bay SR6 Wall						
SR8_S_1270	SR8 - Utility Trough	4d	18-Dec-16	21-Dec-16	SR8 - Utility Trough						
SR8_S_1280	SR8 - Bay SR6 OHVD Slab & Hanger Wall	8d	22-Dec-16	29-Dec-16	SR8 - Bay SR6 OHVD Slab & Hanger Wall						
SR8_S_1290	SR8 - Bay SR6 Roof Slab	7d	30-Dec-16	05-Jan-17	SR8 - Bay SR6 Roof Slab						
Zone W2											
Bay 7											
TS3W_3230	Bay 7 - Concrete Strut & Remove SL 6,7,8	7d	06-Oct-16 A	07-Nov-16	Bay 7 - Concrete Strut & Remove SL 6,7,8						
TS3W_3240	Bay 7 - Spray Type Waterproofing, Protection Board & Backfilling	10d	15-Nov-16	24-Nov-16	Bay 7 - Spray Type Waterproofing, Protection Board & Backfilling						
Bay N7											
TS3W_3270	Bay N7 - Utility Trough	4d	25-Aug-16 A	18-Nov-16	Bay N7 - Utility Trough						
TS3W_3250	Bay N7 - Base Slab	7d	26-Aug-16 A	04-Oct-16 A							
TS3W_3260	Bay N7 - Wall 5 & 1	7d	08-Nov-16	14-Nov-16	Bay N7 - Wall 5 & 1						

Activity ID	Activity Name	Original Duration	Start	Finish	2016				2017	
					Oct	Nov	Dec	Jan	Feb	
TS3W_3280	Bay N7 - OHVD	11d	19-Nov-16	29-Nov-16						
TS3W_3290	Bay N7 - Roof Slab	10d	30-Nov-16	09-Dec-16						
Bay S7		36d	26-Sep-16 A	09-Dec-16						
TS3W_3320	Bay S7 - Utility Trough	4d	26-Sep-16 A	18-Nov-16						
TS3W_3310	Bay S7 - Wall 6 & 2	7d	08-Nov-16	14-Nov-16						
TS3W_3330	Bay S7 - OHVD	11d	19-Nov-16	29-Nov-16						
TS3W_3340	Bay S7 - Roof Slab	10d	30-Nov-16	09-Dec-16						
Bay SR7		40d	31-Oct-16	09-Dec-16						
SR8_S_1300	SR8 - Bay SR7 - Base Slab	7d	31-Oct-16	06-Nov-16						
SR8_S_1310	SR8 - Bay SR7 - Wall	7d	08-Nov-16	14-Nov-16						
SR8_S_1320	SR8 - Bay SR7 - Utility Trough	4d	15-Nov-16	18-Nov-16						
SR8_S_1330	SR8 - Bay SR7 - OHVD	11d	19-Nov-16	29-Nov-16						
SR8_S_1340	SR8 - Bay SR7 - Roof Slab	10d	30-Nov-16	09-Dec-16						
Bay 8		74d	21-Sep-16 A	01-Jan-17						
TS3W_3400	Bay 8 - Waterproofing (Include SR8 - Bay SR8)	3d	24-Sep-16 A	05-Oct-16 A						
TS3W_3410	Bay 8 - Concrete Strut & Remove SL 6,7,8	7d	22-Oct-16 A	13-Nov-16						
TS3W_3430	Bay 8 - Break Trough Bulkhead Bay 8N, 8S & SR8	21d	26-Oct-16 A	11-Dec-16						
TS3W_3420	Bay 8 - Spray Type Waterproofing, Protection Board & Backfilling	10d	21-Nov-16	30-Nov-16						
Bay N8		74d	22-Sep-16 A	01-Jan-17						
TS3W_3440	Bay N8 - Base Slab	7d	22-Sep-16 A	15-Oct-16 A						
TS3W_3460	Bay N8 - Utility Trough	4d	18-Oct-16 A	24-Nov-16						
TS3W_3450	Bay N8 - Wall 5 & 1	7d	14-Nov-16	20-Nov-16						
TS3W_3470	Bay N8 - OHVD	11d	12-Dec-16	22-Dec-16						
TS3W_3480	Bay N8 - Roof Slab	10d	23-Dec-16	01-Jan-17						
Bay S8		74d	21-Sep-16 A	01-Jan-17						
TS3W_3490	Bay S8 - Base Slab	7d	21-Sep-16 A	12-Oct-16 A						
TS3W_3600	Bay S8 - Utility Trough	4d	24-Oct-16 A	24-Nov-16						
TS3W_3500	Bay S8 - Wall 6 & 2	7d	14-Nov-16	20-Nov-16						
SR8_S_1370	SR8 - Utility Trough	4d	21-Nov-16	24-Nov-16						
TS3W_3610	Bay S8 - OHVD	11d	12-Dec-16	22-Dec-16						
TS3W_3620	Bay S8 - Roof Slab	10d	23-Dec-16	01-Jan-17						
Bay SR8		63d	31-Oct-16	01-Jan-17						
SR8_S_1350	SR8 - Bay SR8 - Base Slab	7d	31-Oct-16	06-Nov-16						
SR8_S_1360	SR8 - Bay SR8 - Wall	7d	14-Nov-16	20-Nov-16						
SR8_S_1380	SR8 - Bay SR8 - OHVD	11d	12-Dec-16	22-Dec-16						
SR8_S_1390	SR8 - Bay SR8 - Roof Slab	10d	23-Dec-16	01-Jan-17						
Egress Passage (EP-02) & Cross Passage (CP31)		55d	22-Aug-16 A	11-Dec-16						
TS3W_3680	CP-31 + EP-02 Stair Case Structure at Bay N2 & S2	21d	22-Aug-16 A	20-Nov-16						
TS3W_3690	EP-02 Corridor on Top of S2 & S3 Roof	21d	21-Nov-16	11-Dec-16						
Egress Passage (EP-03) & Cross Passage (CP-30)		35d	22-Oct-16 A	23-Nov-16						
TS3W_3700	CP-30 in Bay 5	7d	22-Oct-16 A	19-Nov-16						
TS3W_3710	Waterproofing to CP-30 & Backfilling up to SR8 BaySR6 Base Slab Bottom	4d	20-Nov-16	23-Nov-16						
SR8 Tunnel		114d	21-Aug-16 A	11-Dec-16						
Waterproofing to Base Slab		10d	21-Aug-16 A	09-Nov-16						

Activity ID	Activity Name	Original Duration	Start	Finish	2016				2017		
					Oct	Nov	Dec	Jan	Feb		
SR8_S_1000	Waterproof to Base Slab - Bay SR1 to SR3A	10d	21-Aug-16 A	09-Nov-16	Waterproof to Base Slab - Bay SR1 to SR3A						
Bay SR1		25d	31-Oct-16	24-Nov-16							
SR8_S_1020	SR8 - Bay SR1 - Utility Trough	4d	31-Oct-16	03-Nov-16	SR8 - Bay SR1 - Utility Trough						
SR8_S_1030	SR8 - Bay SR1 - OHVD Slab & Hanger Wall	11d	04-Nov-16	14-Nov-16	SR8 - Bay SR1 - OHVD Slab & Hanger Wall						
SR8_S_1040	SR8 - Bay SR1 - Roof Slab	10d	15-Nov-16	24-Nov-16	SR8 - Bay SR1 - Roof Slab						
Bay SR2		32d	31-Oct-16	01-Dec-16							
SR8_S_1050	SR8 - Bay SR2 - Base Slab	7d	31-Oct-16	06-Nov-16	SR8 - Bay SR2 - Base Slab						
SR8_S_1060	SR8 - Bay SR2 - Utility Trough	4d	07-Nov-16	10-Nov-16	SR8 - Bay SR2 - Utility Trough						
SR8_S_1070	SR8 - Bay SR2 - OHVD Slab & Hanger Wall	11d	11-Nov-16	21-Nov-16	SR8 - Bay SR2 - OHVD Slab & Hanger Wall						
SR8_S_1080	SR8 - Bay SR2 - Roof Slab	10d	22-Nov-16	01-Dec-16	SR8 - Bay SR2 - Roof Slab						
Bay SR3 (Part Within Zone E2)		42d	31-Oct-16	11-Dec-16							
SR8_S_1090	Breaking to Cut Off Level of Temporary Diaphragm Wall	3d	31-Oct-16	02-Nov-16	Breaking to Cut Off Level of Temporary Diaphragm Wall						
SR8_S_1100	SR8 - Bay SR3 - Base Slab	7d	03-Nov-16	09-Nov-16	SR8 - Bay SR3 - Base Slab						
SR8_S_1110	SR8 - Bay SR3 - Wall	7d	10-Nov-16	16-Nov-16	SR8 - Bay SR3 - Wall						
SR8_S_1120	SR8 - Bay SR3 - Utility Trough	4d	17-Nov-16	20-Nov-16	SR8 - Bay SR3 - Utility Trough						
SR8_S_1130	SR8 - Bay SR3 - OHVD Slab & Hanger Wall	11d	21-Nov-16	01-Dec-16	SR8 - Bay SR3 - OHVD Slab & Hanger Wall						
SR8_S_1140	SR8 - Bay SR3 - Roof Slab	10d	02-Dec-16	11-Dec-16	SR8 - Bay SR3 - Roof Slab						
Bay SR4 (Within Zone W1)		42d	31-Oct-16	11-Dec-16							
SR8_S_1150	SR8 - Bay SR4 - Base Slab	10d	31-Oct-16	09-Nov-16	SR8 - Bay SR4 - Base Slab						
SR8_S_1160	SR8 - Bay SR4 - Wall	7d	10-Nov-16	16-Nov-16	SR8 - Bay SR4 - Wall						
SR8_S_1170	SR8 - Bay SR4 - Utility Trough	4d	17-Nov-16	20-Nov-16	SR8 - Bay SR4 - Utility Trough						
SR8_S_1180	SR8 - Bay SR4 - OHVD Slab & Hanger Wall	11d	21-Nov-16	01-Dec-16	SR8 - Bay SR4 - OHVD Slab & Hanger Wall						
SR8_S_1190	SR8 - Bay SR4 - Roof Slab	10d	02-Dec-16	11-Dec-16	SR8 - Bay SR4 - Roof Slab						
Bay SR5 (Within Zone W1)		42d	31-Oct-16	11-Dec-16							
SR8_S_1200	SR8 - Bay SR5 - Base Slab	10d	31-Oct-16	09-Nov-16	SR8 - Bay SR5 - Base Slab						
SR8_S_1210	SR8 - Bay SR5 - Wall	7d	10-Nov-16	16-Nov-16	SR8 - Bay SR5 - Wall						
SR8_S_1220	SR8 - Bay SR5 - Utility Trough	4d	17-Nov-16	20-Nov-16	SR8 - Bay SR5 - Utility Trough						
SR8_S_1230	SR8 - Bay SR5 - OHVD Slab & Hanger Wall	11d	21-Nov-16	01-Dec-16	SR8 - Bay SR5 - OHVD Slab & Hanger Wall						
SR8_S_1240	SR8 - Bay SR5 - Roof Slab	10d	02-Dec-16	11-Dec-16	SR8 - Bay SR5 - Roof Slab						
Waterproofing to Roof Slab		4d	31-Oct-16	03-Nov-16							
SR8_S_1410	Waterproof to Roof Slab - Bay SR2	4d	31-Oct-16	03-Nov-16	Waterproof to Roof Slab - Bay SR2						
SR8_S_1420	Waterproof to Roof Slab - Bay SR3	4d	31-Oct-16	03-Nov-16	Waterproof to Roof Slab - Bay SR3						
SR8_S_1430	Waterproof to Roof Slab - Bay SR4	4d	31-Oct-16	03-Nov-16	Waterproof to Roof Slab - Bay SR4						
SR8_S_1440	Waterproof to Roof Slab - Bay SR5	4d	31-Oct-16	03-Nov-16	Waterproof to Roof Slab - Bay SR5						
SR8_S_1450	Waterproof to Roof Slab - Bay SR6	4d	31-Oct-16	03-Nov-16	Waterproof to Roof Slab - Bay SR6						
SR8_S_1460	Waterproof to Roof Slab - Bay SR7	4d	31-Oct-16	03-Nov-16	Waterproof to Roof Slab - Bay SR7						
SR8_S_1470	Waterproof to Roof Slab - Bay SR8	4d	31-Oct-16	03-Nov-16	Waterproof to Roof Slab - Bay SR8						
SR8_S_1400	Waterproof to Roof Slab - Bay SR1	4d	31-Oct-16	03-Nov-16	Waterproof to Roof Slab - Bay SR1						